

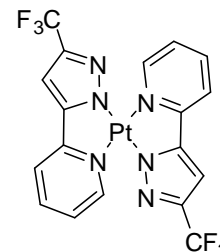


Crystal Organic Light-Emitting Diodes with Perfectly Oriented Non-Doped Pt-Based Emitting Layer

Product Specifications

LT-N787 Pt(fppz)₂

Name.	Pt(II) bis(3-(trifluoromethyl)-5-(2-pyridyl)-pyrazolate)
CAS No.	1239344-58-1
Grade	Sublimed, >99 % (HPLC)
Formula	C ₁₈ H ₁₀ F ₆ N ₆ Pt
Molecular Weight	619.38 g/mole
PL	625 nm (film)
HOMO/LUMO	-5.67 eV/-2.65 eV



* Reference: *Adv. Mater.* **2016**, *28*, 2526–2532

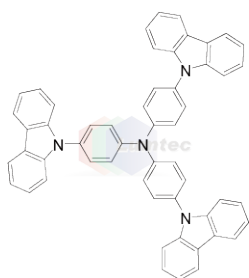
Features

- The OLED with an extremely high maximum EQE of 38.8% using the Pt-based thin-film emitting layer with PLQY of 96% and θ of 93%.

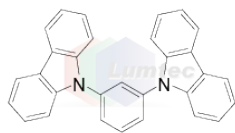
Device Application

The Device:

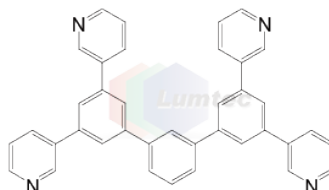
ITO/ TAPC (80 nm)/ TcTa (10 nm)/ Pt(fppz)₂ (30 nm)/ BMPYPB (15 nm)/ BMPYPB:1 wt% Pb₂CO₃ (40 nm)/ Al (100 nm).



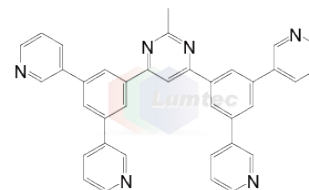
LT-E207 TcTa



LT-E107 MCP



LT-N865 BmPyPhB



LT-N876 B3PYMPM

Materials are used by qualified for testing and research only, there are not guaranteed in patent contention by customer use.

Head office: 31F-5, No. 99, Sec. 1, Xintai 5th Rd., Xizhi, New Taipei City 22175, Taiwan, R.O.C., TEL: +886-2-2697-5600, FAX: +886-2-2697-5601.

Factory I: 2F, No. 21, R&D Road II, Science-Based Industrial Park, Hsin-Chu 30076, Taiwan, R.O.C., TEL: +886-3-666-3188, FAX: +886-3-666-9288.

總公司: 22175 新北市汐止區新台五路一段 99 號 31 樓之 5, 電話: 02-2697-5600, 傳真: 02-2697-5601.

新竹廠: 30076 新竹科學工業園區研發二路 17 號 2 樓, 電話: 03-666-3188, 傳真: 03-666-9288.

E-mail: sales@lumtec.com.tw; Web: <http://www.lumtec.com.tw>