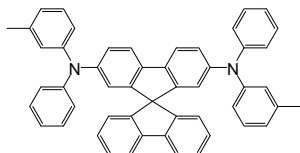


LT-E105 | Spiro-TPD

N,N'-Bis(3-methylphenyl)-*N,N'*-bis(phenyl)-2,7-diamino-9,9-spirofluorene

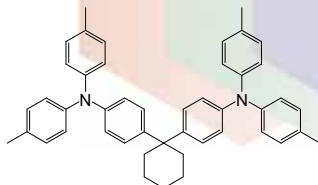
CAS No. : 1033035-83-4
 Grade : Sublimed, > 99% (HPLC)
 Formula : $C_{51}H_{38}N_2$
 M.W. : 678.86 g/mole
 UV : 379 nm (in THF)
 PL : 416 nm (in THF)
 TGA : > 280 °C (0.5% weight loss)
 Solvent : Toluene, Chloroform



LT-N137 | TAPC

Di-[4-(*N,N*-di-*p*-tolyl-amino)-phenyl]cyclohexane

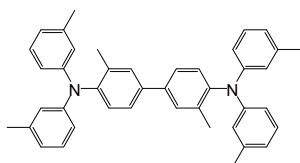
CAS No. : 58473-78-2
 Grade : Sublimed, > 99.5% (HPLC)
 Formula : $C_{46}H_{46}N_2$
 M.W. : 626.87 g/mole
 UV : 305 nm (in THF)
 PL : 414 nm (in THF)
 TGA : > 290 °C (0.5% weight loss)
 Solvent : Toluene, Chloroform
 Reference : *Organic Electronics 13 (2012) 914-918*



LT-N140 | HMTDP

N,N,N',N'-Tetra-(3-methylphenyl)-3,3'-dimethylbenzidine

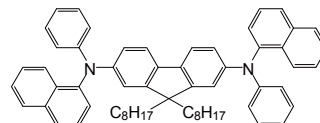
CAS No. : 105465-14-3
 Grade : Sublimed, > 99% (HPLC)
 Formula : $C_{42}H_{40}N_2$
 M.W. : 572.78 g/mole
 UV : 302 nm (in THF)
 PL : 399 nm (in THF)
 TGA : > 240 °C (0.5% weight loss)
 Solvent : Toluene, Chloroform



LT-N154 | DOFL-NPB

N,N'-Di(naphthalen-1-yl)-9,9-dioctyl-*N,N'*-diphenyl-9H-fluorene-2,7-diamine

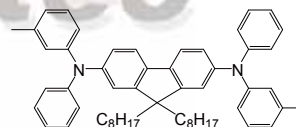
CAS No. : 870197-09-4
 Grade : > 99% (HPLC)
 Formula : $C_{61}H_{64}N_2$
 M.W. : 825.17 g/mole
 UV : 382 nm (in THF)
 PL : 460 nm (in THF)
 TGA : > 250 °C (0.5% weight loss)
 Solvent : Toluene, Chloroform



LT-N155 | DOFL-TPD

N,N'-Bis(3-methylphenyl)-*N,N'*-bis(phenyl)-9,9-dioctylfluorene

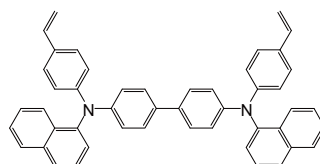
CAS No. : 439942-97-9
 Grade : > 99% (HPLC)
 Formula : $C_{55}H_{64}N_2$
 M.W. : 753.11 g/mole
 UV : 376 nm (in THF)
 PL : 401 nm (in THF)
 TGA : > 250 °C (0.5% weight loss)
 Solvent : Toluene, Chloroform



LT-N157 | VNPB

N,N'-Di(naphthalen-1-yl)-*N,N'*-bis(4-vinylphenyl)biphenyl-4,4'-diamine

CAS No. : 1010396-31-2
 Grade : > 95% (HPLC)
 Formula : $C_{48}H_{36}N_2$
 M.W. : 640.81 g/mole
 UV : 339 nm (in THF)
 PL : 450 nm (in THF)
 Solvent : Toluene, Chloroform

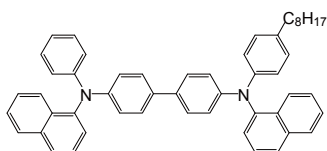


LT-N158 | ONPB

N,N'-Di(naphthalen-1-yl)-*N,N'*-(4-octylphenyl)-*N,N'*-henylbiphenyl-4,4'-diamine

CAS No. : 1431521-16-2
 Grade : > 99% (HPLC)
 Formula : $C_{52}H_{48}N_2$
 M.W. : 700.95 g/mole
 UV : 347 nm (film)
 PL : 439 nm (film)
 TGA : > 300 °C (0.5% weight loss)
 Solvent : Toluene, Chloroform

Reference : *Journal of Photopolymer Science and Technology, Vol. 25, 3(2012) 335-339*

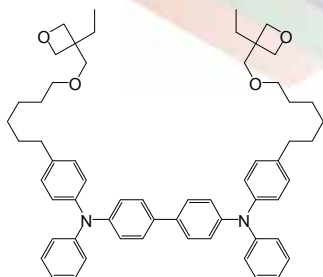


LT-N159 | OTPD

N,N'-Bis(4-(6-((3-ethyloxetan-3-yl)methoxy)hexyl)phenyl)-*N,N'*-diphenylbiphenyl-4,4'-diamine

CAS No. : 746634-00-4
 Grade : > 99% (HPLC)
 Formula : $C_{60}H_{72}N_2O_4$
 M.W. : 885.22 g/mole
 UV : 308,353 nm (in CH_2Cl_2)
 PL : 410 nm (in CH_2Cl_2)
 Solvent : Toluene, Chloroform

Reference : *1. Adv. Mater. 2006, 18, 948-954*
2. Appl. Phys. Lett. 91, 103507(2007)

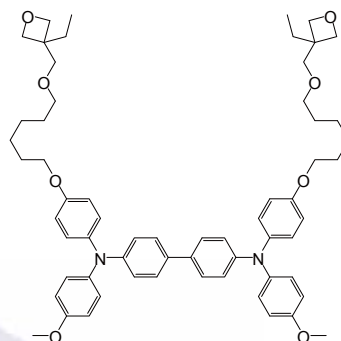


LT-N160 | QUPD

N,N'-Bis(4-(6-((3-ethyloxetan-3-yl)methoxy)hexyloxy)phenyl)-*N,N'*-bis(4-methoxyphenyl)biphenyl-4,4'-diamine

CAS No. : 864130-79-0
 Grade : > 99% (HPLC)
 Formula : $C_{62}H_{76}N_2O_8$
 M.W. : 945.28 g/mole
 UV : 353 nm (in CH_2Cl_2)
 PL : 439 nm (in CH_2Cl_2)
 Solvent : Toluene, Chloroform

Reference : *1. Adv. Mater. 2006, 18, 948-954*
2. Appl. Phys. Lett. 91, 103507(2007)

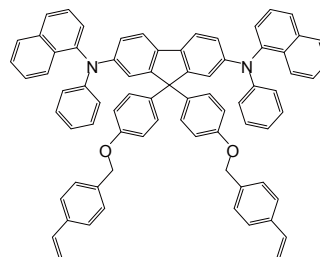


LT-N164 | VB-FNPD

9,9-Bis[4-[(4-ethenylphenyl)methoxy]phenyl]phenyl]-*N,N'*-di-1-naphthalenyl-*N,N'*-diphenyl-9H-fluorene-2,7-diamine

CAS No. : 1173170-48-3
 Grade : > 95% (HPLC)
 Formula : $C_{75}H_{56}N_2O_2$
 M.W. : 1017.26 g/mole
 UV : 356 nm (in CH_2Cl_2)
 PL : 467 nm (in CH_2Cl_2)
 Solvent : Toluene, Chloroform

Reference : *1. Organic Electronics 14 (2013) 1204-1210*
2. J. Mater. Chem., 2009, 19, 3618-3623

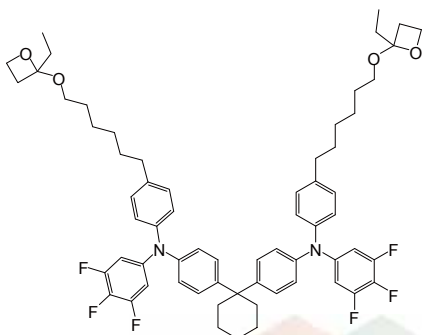


LT-N165 | X-F6-TAPC

N,N'-(4,4'-(Cyclohexane-1,1-diyl)bis(4,1-phenylene))bis(*N*-(4-(6-(2-ethyloxetan-2-yloxy)hexyl)phenyl)-3,4,5-trifluoroaniline)

Grade : > 99% (HPLC)
 Formula : $C_{64}H_{72}F_6N_2O_4$
 M.W. : 1047.26 g/mole
 UV : 300 nm (in CH_2Cl_2)
 Solvent : Toluene, Chloroform

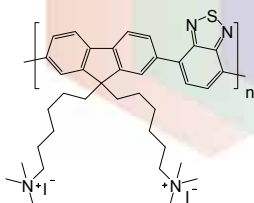
Reference : *Adv. Funct. Mater.* 2013, 23, 359–365



LT-N181 | PFNIBT

Poly(9,9-bis(6-trimethyl ammoniumiodide)-hexyl-fluorene-2,7-diyl-*alt*[(benzo[2,1,3]thiadiazol-4,7-diyl]))

CAS No. : $M_w > 20,000$ (GPC)
 Grade : $(C_{37}H_{50}N_4S)_n$

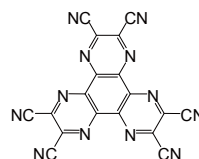


LT-N221 | HAT-CN

Dipyrazino[2,3-*f*:2',3'-*h*]quinoxaline-2,3,6,7,10,11-hexacarbonitrile

CAS No. : 105598-27-4
 Grade : Sublimed, > 99% (HPLC)
 Formula : $C_{18}N_{12}$
 M.W. : 384.27 g/mole
 UV : 282, 321 nm (in CH_2Cl_2)
 PL : 422 nm (in CH_2Cl_2)
 TGA : > 400 °C (0.5% weight loss)
 Solvent : 2-Propanone

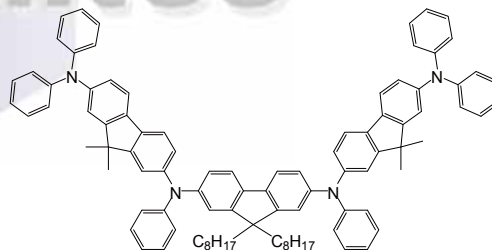
Reference : *Organic Electronics* 14 (2013) 1204–1210



LT-N260 | 3FTPD-C8

N,N'-(9,9-Dioctyl-9H-fluorene-2,7-diyl)bis(9,9-dimethyl-*N,N'*-triphenyl-9H-fluorene-2,7-diamine)

Grade : > 97% (HPLC)
 Formula : $C_{95}H_{94}N_4$
 M.W. : 1291.79 g/mole
 UV : 378 nm (in CH_2Cl_2)
 PL : 426 nm (in CH_2Cl_2)
 Solvent : Toluene, Chloroform

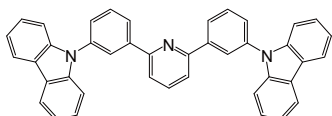


LT-N491 | 26DCzPPy

2,6-Bis(3-(9H-carbazol-9-yl)phenyl)pyridine

CAS No. : 1013405-24-7
 Grade : Sublimed, > 99% (HPLC)
 Formula : $C_{41}H_{27}N_3$
 M.W. : 561.67 g/mole
 UV : 239, 292 nm (in CH_2Cl_2)
 PL : 410 nm (in CH_2Cl_2)
 TGA : > 370 °C (0.5% weight loss)
 Solvent : Toluene, Chloroform

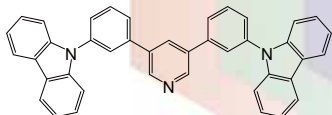
Reference : 1. *Organic Electronics* 13 (2012) 586-592
 2. *Organic Electronics* 13 (2012) 914-918

**LT-N494** | 35DCzPPy

3,5-Bis(3-(9H-carbazol-9-yl)phenyl)pyridine

CAS No. : 1013405-25-8
 Grade : Sublimed, > 99% (HPLC)
 Formula : $C_{41}H_{27}N_3$
 M.W. : 561.67 g/mole
 UV : 307, 317 nm (in CH_2Cl_2)
 PL : 347 nm (in CH_2Cl_2)
 TGA : > 290 °C (0.5% weight loss)
 Solvent : Toluene, Chloroform

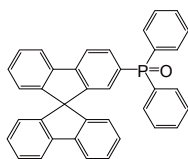
Reference : *Chem. Mater.* 2008, 20, 1691-1693

**LT-N496** | SPPO1

9,9-Spirobifluoren-2-yl-diphenyl-phosphine oxide

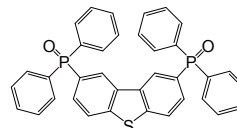
CAS No. : 1125547-88-7
 Grade : Sublimed, > 99% (HPLC)
 Formula : $C_{37}H_{25}OP$
 M.W. : 516.57 g/mole
 UV : 307, 317 nm (in CH_2Cl_2)
 PL : 346 nm (in CH_2Cl_2)
 TGA : > 290 °C (0.5% weight loss)
 Solvent : Toluene, Chloroform

Reference : *Appl. Phys. Lett.* 94, 013301 2009

**LT-N4006** | PPT2,8-Bis(diphenylphosphoryl)dibenzo[*b,f*]thiophene

CAS No. : 1019842-99-9
 Grade : Sublimed, > 99% (HPLC)
 Formula : $C_{36}H_{26}O_2P_2S$
 M.W. : 584.60 g/mole
 UV : 315, 328 nm (in CH_2Cl_2)
 PL : 351 nm (in CH_2Cl_2)
 TGA : > 320 °C (0.5% weight loss)
 Solvent : Toluene, Chloroform

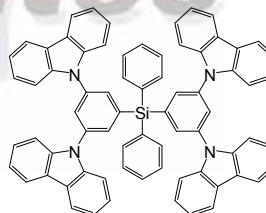
Reference : *J. Mater. Chem.*, 2011, 21, 14604-14609

**LT-N4009** | SiMCP2

Bis[3,5-di(9H-carbazol-9-yl)phenyl]diphenylsilane

CAS No. : 944465-42-3
 Grade : Sublimed, > 99% (HPLC)
 Formula : $C_{72}H_{48}N_4Si$
 M.W. : 977.26 g/mole
 UV : 324, 338 nm (in CH_2Cl_2)
 PL : 362 nm (in CH_2Cl_2)
 TGA : > 380 °C (0.5% weight loss)
 Solvent : Toluene, Chloroform

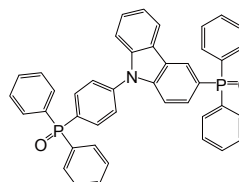
Reference : *J. Mater. Chem.*, 2010, 20, 8411-8416

**LT-N4011** | PPO21

3-(Diphenylphosphoryl)-9-(4-(diphenylphosphoryl)phenyl)-9H-carbazole

CAS No. : 1226860-68-9
 Grade : Sublimed, > 99% (HPLC)
 Formula : $C_{42}H_{31}NO_2P_2$
 M.W. : 643.65 g/mole
 UV : 294, 338 nm (in CH_2Cl_2)
 PL : 361 nm (in THF)
 TGA : > 300 °C (0.5% weight loss)
 Solvent : Toluene, Chloroform

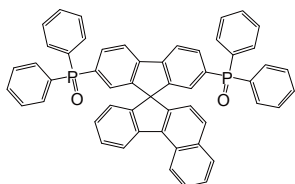
Reference : *Adv. Mater.*, 2011, 23, 4956-4959



LT-N4029 | SPPO21

2,7-Bis(diphenylphosphoryl)spiro[fluorene-7,11'-benzofluorene]

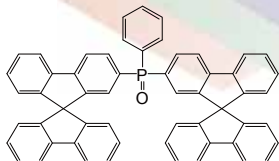
CAS No. : 1270960-64-9
 Grade : Sublimed, > 99% (HPLC)
 Formula : $C_{53}H_{36}O_2P_2$
 M.W. : 766.8 g/mole
 UV : 287 nm (in CH_2Cl_2)
 PL : 419 nm (in CH_2Cl_2)
 TGA : > 350 °C (0.5% weight loss)
 Solvent : Toluene, Chloroform
 Reference : *Thin Solid Films* 519 (2011) 4342-4346



LT-N4034 | Dspiro-PO

Di(9,9-spirobifluoren-2-yl)-phenyl-phosphine oxide

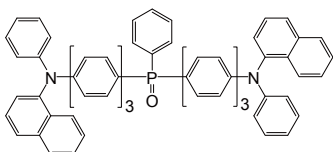
CAS No. : 824426-27-9
 Grade : Sublimed, > 99% (HPLC)
 Formula : $C_{56}H_{35}OP$
 M.W. : 754.85 g/mole
 UV : 275 nm (film)
 PL : 365 nm (film)
 TGA : > 350 °C (0.5% weight loss)
 Solvent : Toluene, Chloroform
 Reference : *Appl. Phys. Lett.* 91, 103507(2007)



LT-N4035 | NP3PPO

4'', 4'''-(Phenylphosphoryl)bis(N-1-naphthyl-N-phenyl-1,1':4',1'':4'',1'''-terphenyl-4-amine)

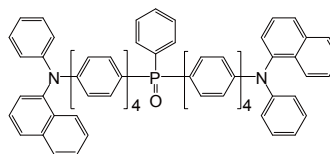
CAS No. : 1415633-86-1
 Grade : > 98% (HPLC)
 Formula : $C_{74}H_{53}N_2OP$
 M.W. : 1017.20 g/mole
 UV : 349 nm (in CH_2Cl_2)
 PL : 466 nm (in CH_2Cl_2)
 TGA : > 320 °C (0.5% weight loss)
 Solvent : Toluene, Chloroform
 Reference : *Chem. Eur. J.* 2012, 18, 13828-13835



LT-N4036 | NP4PPO

4''', 4''''-(Phenylphosphoryl)bis(N-1-naphthyl-N-phenyl-1,1':4',1'':4'',1'''-quaterphenyl-4-amine)

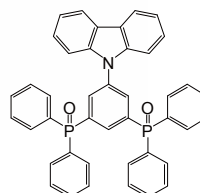
CAS No. : 1415633-87-2
 Grade : > 98% (HPLC)
 Formula : $C_{86}H_{61}N_2OP$
 M.W. : 1169.39 g/mole
 UV : 347 nm (in CH_2Cl_2)
 PL : 471 nm (in CH_2Cl_2)
 TGA : > 450 °C (0.5% weight loss)
 Solvent : Toluene, Chloroform
 Reference : *Chem. Eur. J.* 2012, 18, 13828-13835



LT-N4039 | CzPO2

9-(3,5-Bis(diphenylphosphoryl)phenyl)-9H-carbazole

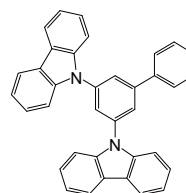
CAS No. : 1256573-07-5
 Grade : Sublimed, > 99% (HPLC)
 Formula : $C_{32}H_{31}NO_2P_2$
 M.W. : 643.65 g/mole
 UV : 291 nm (in CH_2Cl_2)
 PL : 426 nm (in CH_2Cl_2)
 TGA : > 270 °C (0.5% weight loss)
 Solvent : Toluene, Chloroform
 Reference : *Org. Lett.* , 2011, 13, 3146-3149



LT-N4042 | Ph-MCP

3,5-Di(9H-carbazol-9-yl)biphenyl

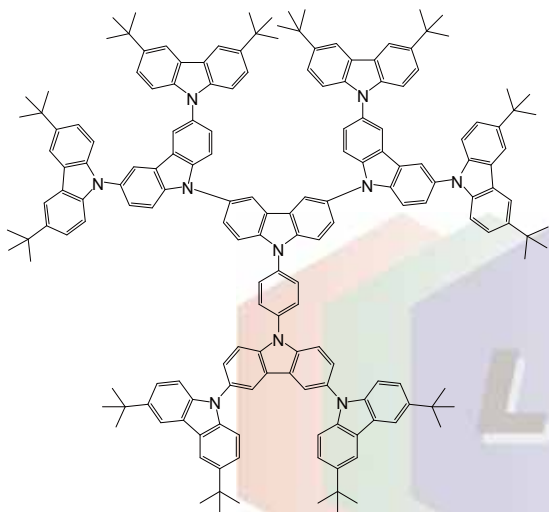
CAS No. : 750573-28-5
 Grade : Sublimed, > 99% (HPLC)
 Formula : $C_{36}H_{24}N_2$
 M.W. : 484.59 g/mole
 UV : 241, 292 nm (in CH_2Cl_2)
 PL : 363 nm (in CH_2Cl_2)
 TGA : > 270 °C (0.5% weight loss)
 Solvent : Chloroform



LT-N4041 | G3-tCbz

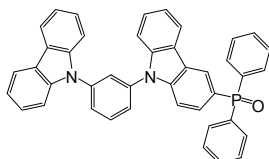
6-(3',6'-Di-*tert*-butyl-6-(3,6-di-*tert*-butyl-9*H*-carbazol-9-yl)-9*H*-3,9'-bicarbazol-9-yl)-9-(4-(3',6'-di-*tert*-butyl-6-(3,6-di-*tert*-butyl-9*H*-carbazol-9-yl)-9*H*-3,9'-bicarbazol-9-yl)phenyl)-3',6'-bis(3,6-di-*tert*-butyl-9*H*-carbazol-9-yl)-9*H*-3,9'-bicarbazole

CAS No. : 1025079-68-8
 Grade : > 98% (NMR)
 Formula : $C_{174}H_{172}N_{10}$
 M.W. : 2403.29 g/mole
 UV : 244, 349 nm (in CH_2Cl_2)
 PL : 402 nm (in CH_2Cl_2)
 Solvent : Toluene, Chloroform
 Reference : *Adv. Mater.*, 2012, 24, 1873-1877

**LT-N4047** | mCPPPO

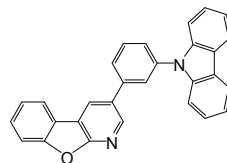
9-(3-(9*H*-Carbazol-9-yl)phenyl)-3-(diphenylphosphoryl)-9*H*-carbazole

CAS No. : 1296229-26-9
 Grade : Sublimed, > 99% (HPLC)
 Formula : $C_{42}H_{29}N_2OP$
 M.W. : 608.67 g/mole
 UV : 324, 338 nm (in CH_2Cl_2)
 PL : 361 nm (in CH_2Cl_2)
 TGA : > 270 °C (0.5% weight loss)
 Solvent : Toluene, Chloroform
 Reference : *Organic Electronics* 12 (2011) 1711-1715

**LT-N4057** | PCz-BFP

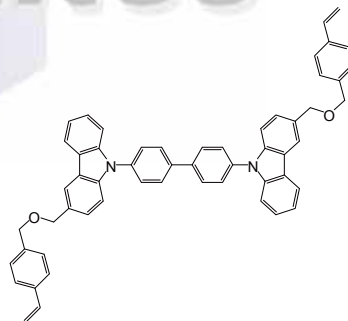
3-(3-(9*H*-Carbazol-9-yl)phenyl)benzofuro[2,3-*b*]pyridine

CAS No. : 1424369-36-7
 Grade : Sublimed, > 99% (HPLC)
 Formula : $C_{29}H_{18}N_2O$
 M.W. : 410.47 g/mole
 UV : 241, 293 nm (in CH_2Cl_2)
 PL : 364 nm (in CH_2Cl_2)
 TGA : > 270 °C (0.5% weight loss)
 Solvent : Toluene, Chloroform
 Reference : *Adv. Mater.* 2013, 25, 596-600

**LT-N4063** | DV-CBP

4,4'-Bis(3-((4-vinylphenoxy)methyl)-9*H*-carbazol-9-yl)biphenyl

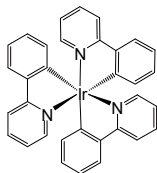
CAS No. : 1428901-78-3
 Grade : > 99% (HPLC)
 Formula : $C_{54}H_{40}N_2O_2$
 M.W. : 748.91 g/mole
 UV : 246, 295 nm (in CH_2Cl_2)
 PL : 381 nm (in CH_2Cl_2)
 Solvent : 1,2-dichloroethane, $CHCl_3$
 Reference : *Organic Electronics*, 14, 2013, 1614-1620



LT-E504 | *fac*-Ir(ppy)₃

fac-Tris(2-phenylpyridine)iridium(III)

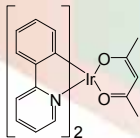
CAS No. : 94928-86-6
 Grade : Sublimed, > 99% (HPLC)
 Formula : C₂₄H₁₆IrN₃
 M.W. : 654.78 g/mole
 UV : 282, 377 nm (in THF)
 PL : 513 nm (in THF)
 TGA : > 300 °C (0.5% weight loss)
 Solvent : Toluene, Chloroform
 Reference : *Appl. Phys. Lett.* 91, 103507(2007)



LT-E505 | Ir(ppy)₂(acac)

Bis(2-phenylpyridine)(acetylacetonate)iridium(III)

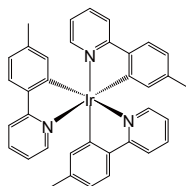
CAS No. : 337526-85-9
 Grade : Sublimed, > 99% (HPLC)
 Formula : C₂₇H₂₃IrN₂O₂
 M.W. : 599.70 g/mole
 UV : 259 nm (in THF)
 PL : 524 nm (in THF)
 TGA : > 270 °C (0.5% weight loss)
 Solvent : Toluene, Chloroform



LT-N506 | Ir(mppy)₃

Tris[2-(*p*-tolyl)pyridine]iridium(III)

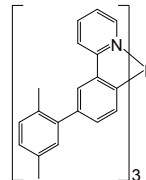
CAS No. : 149005-33-4
 Grade : Sublimed, > 99% (HPLC)
 Formula : C₃₆H₃₀IrN₃
 M.W. : 696.86 g/mole
 UV : 287, 373 nm (in CH₂Cl₂)
 PL : 514 nm (in CH₂Cl₂)
 TGA : > 330 °C (0.5% weight loss)
 Solvent : Toluene, Chloroform
 Reference : *Organic Electronics* 13 (2012) 388-393



LT-N522 | TEG

fac-Tris(2-(3-*p*-xylyl)phenyl)pyridine iridium(III)

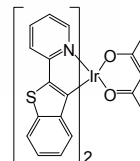
CAS No. : 1338784-40-9
 Grade : > 99% (HPLC)
 Formula : C₅₇H₄₈IrN₃
 M.W. : 967.3 g/mole
 UV : 400 nm (in film)
 PL : 539 nm (in film)
 TGA : > 250 °C (0.5% weight loss)
 Solvent : Chloroform
 Reference : *Appl. Phys. Lett.* 91, 103507(2007)



LT-E709 | Ir(btp)₂(acac)

Bis(2-benzothio-phen-2-yl-pyridine)(acetylacetonate)iridium(III)

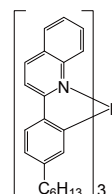
CAS No. : 343978-79-0
 Grade : Sublimed, > 99% (HPLC)
 Formula : C₃₁H₂₃IrN₂O₂S₂
 M.W. : 711.87 g/mole
 UV : 283 nm (in THF)
 PL : 615 nm (in THF)
 TGA : > 310 °C (0.5% weight loss)
 Solvent : Toluene, Chloroform
 Reference : *J. Mater. Chem.*, 2011, 21, 4918-4926



LT-N741 | Hex-Ir(phq)₃

Tris[2-(4-*n*-hexylphenyl)quinoline]iridium(III)

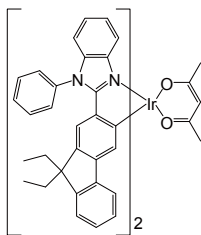
CAS No. : 1268460-37-2
 Grade : > 99% (HPLC)
 Formula : C₆₃H₆₆IrN₃
 M.W. : 1057.43 g/mole
 UV : 323 nm (in CH₂Cl₂)
 PL : 583 nm (in CH₂Cl₂)
 TGA : > 250 °C (0.5% weight loss)
 Solvent : Toluene, Chloroform
 Reference : *Synthetic Metals* 161 (2011) 148-152



LT-N744 | Ir(fbi)₂(acac)

Bis(2-(9,9-diethyl-fluoren-2-yl)-1-phenyl-1*H*-benzo[*d*]imidazolato)(acetylacetonate)iridium(III)

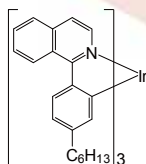
CAS No. : 725251-24-1
 Grade : > 99% (HPLC)
 Formula : C₆₅H₅₇IrN₄O₂
 M.W. : 1118.40 g/mole
 UV : 421 nm (in THF)
 PL : 538 nm (in THF)
 TGA : > 270 °C (0.5% weight loss)
 Solvent : Toluene, Chloroform
 Reference : *Synthetic Metals 160 (2010) 2393-2396*



LT-N754 | Hex-Ir(piq)₃

Tris[2-(4-*n*-hexylphenyl)quinoline]iridium(III)

CAS No. : 1240249-29-9
 Grade : > 99% (HPLC)
 Formula : C₆₃H₆₆IrN₃
 M.W. : 1057.43 g/mole
 UV : 325 nm (in CH₂Cl₂)
 PL : 617 nm (in CH₂Cl₂)
 TGA : > 250 °C (0.5% weight loss)
 Solvent : Toluene, Chloroform
 Reference : *Synthetic Metals 161 (2011) 148-152*

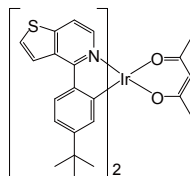


LT-N758 | PO-01-TB

Iridium(III) bis(4-(4-*tert*-butylphenyl)thieno[3,2-*c*]pyridinato-*N,C2'*)acetylacetonate

CAS No. : 1267497-10-8
 Grade : Sublimed, > 99% (HPLC)
 Formula : C₃₉H₃₉IrN₂O₂S₂
 M.W. : 824.21 g/mole
 UV : 448 nm (in CH₂Cl₂)
 PL : 562 nm (in CH₂Cl₂)
 TGA : > 250 °C (0.5% weight loss)

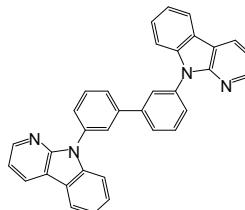
Reference : 1. *TW1395804, US 8,722,207*;
 2. *Organic Electronics, 2012, 13, 2149-2155*;
 3. *Mater. Chem. C, 2013, 1, 5008-5014*



LT-N4092 | CbBPCb

3,3'-Di(9*H*-pyrido[2,3-*b*]indol-9-yl)biphenyl

Grade : C₃₄H₂₂N₄
 Formula : 486.57 g/mole



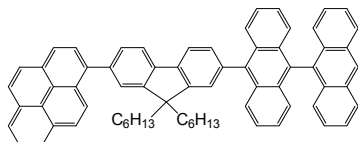
Lumtec

LT-N4005 | DAnF6Pye

1-(7-(9,9'-Bianthracen-10-yl)-9,9-dihexyl-9H-fluoren-2-yl)pyrene

CAS No. : 1705571-71-6
 Grade : > 99% (HPLC)
 Formula : C₆₉H₅₈
 M.W. : 877.20 g/mole
 UV : 358 nm (in CH₂Cl₂)
 PL : 437 nm (in CH₂Cl₂)
 Solvent : Toluene, Chloroform

Reference : TW. I402243

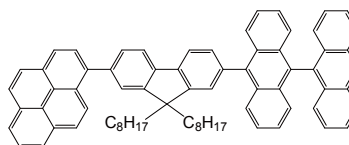


LT-N4040 | BAnF8Pye

1-(7-(9,9'-bianthracen-10-yl)-9,9-dioctyl-9H-fluoren-2-yl)pyrene

CAS No. : 1258522-34-7
 Grade : > 99% (HPLC)
 Formula : C₇₃H₆₆
 M.W. : 943.31 g/mole
 UV : 257, 356 nm (in CH₂Cl₂)
 PL : 440 nm (in CH₂Cl₂)
 TGA : > 330 °C (0.5% weight loss)
 Solvent : Toluene, Chloroform

Reference : TW. I402243



LT-E408 | TDAF

2,7-Bis[9,9-di(4-methylphenyl)-fluoren-2-yl]-9,9-di(4-methylphenyl)fluorene

CAS No. : 474918-42-8
 Grade : Sublimed, > 98% (HPLC)
 Formula : C₈₁H₆₂
 M.W. : 1035.36 g/mole
 UV : 353 nm (in THF)
 PL : 397, 419 nm (in THF)
 TGA : > 370 °C (0.5% weight loss)
 Solvent : Toluene, Chloroform

Reference : J. Phys. Chem. C 2007, 111, 108-115

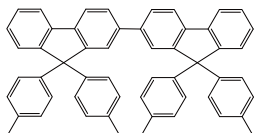


LT-E413 | BDAF

2-[9,9-Di(4-methylphenyl)-fluoren-2-yl]-9,9-di(4-methylphenyl)fluorene

CAS No. : 854046-47-2
 Grade : Sublimed, > 97% (HPLC)
 Formula : C₅₄H₄₂
 M.W. : 690.91 g/mole
 UV : 333 nm (in THF)
 PL : 386 nm (in THF)
 TGA : > 310 °C (0.5% weight loss)
 Solvent : Toluene, Chloroform

Reference : Org. Lett., Vol. 7, No. 23, 2005

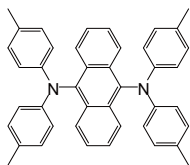


LT-N507 | TTPA

9,10-Bis[*N,N*-di-(*p*-tolyl)-amino]anthracene

CAS No. : 177799-16-5
 Grade : Sublimed, > 99% (HPLC)
 Formula : $C_{24}H_{26}N_2$
 M.W. : 568.75 g/mole
 UV : 294, 471 nm (in CH_2Cl_2)
 PL : 554 nm (in CH_2Cl_2)
 TGA : > 280 °C (0.5% weight loss)
 Solvent : Toluene, Chloroform

Reference : *Chem. Mater.*, 2002, 14, 3958~3963.

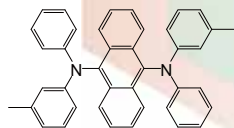


LT-N508 | TPA

9,10-Bis[phenyl(*m*-tolyl)-amino]anthracene

CAS No. : 189263-81-8
 Grade : Sublimed, > 99% (HPLC)
 Formula : $C_{40}H_{32}N_2$
 M.W. : 540.70 g/mole
 UV : 292, 458 nm (in CH_2Cl_2)
 PL : 532 nm (in CH_2Cl_2)
 TGA : > 270 °C (0.5% weight loss)
 Solvent : Toluene, Chloroform

Reference : *Chem. Mater.*, 2002, 14, 3958~3963.

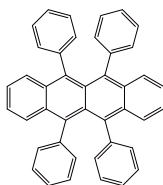


LT-E707 | Rubrene

5,6,11,12-Tetraphenylnaphthacene

CAS No. : 517-51-1
 Grade : Sublimed, > 99%
 Formula : $C_{42}H_{28}$
 M.W. : 532.67 g/mole
 UV : 299 nm (in THF)
 PL : 553 nm (in THF)
 TGA : > 250 °C (0.5% weight loss)
 Solvent : Toluene, Chloroform

Reference : 1. *Organic Electronics* 11 (2010) 641-648;
 2. *Appl. Mater. Interfaces*, 2011, 3(7), 2496-2503

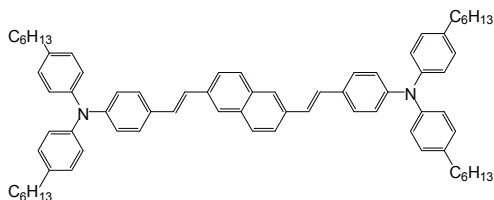


LT-N663 | N-BDAVBi-C6

4,4'-(1*E*,1'*E*)-2,2'-(Naphthalene-2,6-diyl)bis(ethene-2,1-diyl)bis(*N,N*-bis(4-hexylphenyl)aniline)

CAS No. : 1258522-36-9
 Grade : > 99% (HPLC)
 Formula : $C_{74}H_{86}N_2$
 M.W. : 1003.49 g/mole
 UV : 303, 418 nm (in CH_2Cl_2)
 PL : 502 nm (in CH_2Cl_2)
 Solvent : Toluene, Chloroform

Reference : *Organic Electronics* 10 (2009) 1610-1614



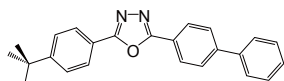
Lumtec

LT-E303 | PBD

2-(4-Biphenyl)-5-(4-*tert*-butylphenyl)-1,3,4-oxadiazole

CAS No. : 15082-28-7
 Grade : Sublimed, > 99% (HPLC)
 Formula : $C_{24}H_{22}N_2O$
 M.W. : 354.44 g/mole
 UV : 305 nm (in THF)
 PL : 380 nm (in THF)
 TGA : > 210 °C (0.5% weight loss)
 Solvent : Toluene, Chloroform

Reference : *Australian Journal of Chemistry* 2012, 65(9), 1244-1251

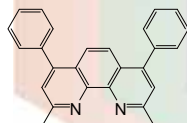


LT-E304 | BCP

2,9-Dimethyl-4,7-diphenyl-1,10-phenanthroline

CAS No. : 4733-39-5
 Grade : Sublimed, > 99% (HPLC)
 Formula : $C_{26}H_{20}N_2$
 M.W. : 360.45 g/mole
 UV : 277 nm (in THF)
 PL : 386 nm (in THF)
 TGA : > 240 °C (0.5% weight loss)
 Solvent : Toluene, Chloroform

Reference : *J. Mater. Chem.*, 2012, 22, 4660-4668

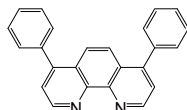


LT-E305 | Bphen

4,7-Diphenyl-1,10-phenanthroline

CAS No. : 1662-01-7
 Grade : Sublimed, > 99% (HPLC)
 Formula : $C_{24}H_{16}N_2$
 M.W. : 332.4 g/mole
 UV : 272 nm (in THF)
 PL : 379 nm (in THF)
 TGA : > 240 °C (0.5% weight loss)
 Solvent : Toluene, Chloroform

Reference : *J. Mater. Chem.*, 2012, 22, 4660-4668

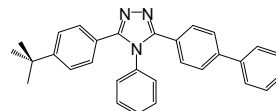


LT-N836 | TAZ

3-(4-Biphenyl)-4-phenyl-5-*tert*-butylphenyl-1,2,4-triazole

CAS No. : 150405-69-9
 Grade : Sublimed, > 98% (HPLC)
 Formula : $C_{30}H_{27}N_3$
 M.W. : 429.56 g/mole
 UV : 290 nm (in THF)
 PL : 370 nm (in THF)
 TGA : > 250 °C (0.5% weight loss)
 Solvent : Toluene, Chloroform

Reference : *Chemistry Letters*. Vol. 36, No. 2, P262, 2007.

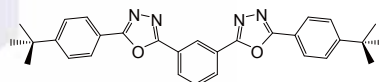


LT-N855 | OXD-7

1,3-Bis[2-(4-*tert*-butylphenyl)-1,3,4-oxadiazol-5-yl]benzene

CAS No. : 138372-67-5
 Grade : Sublimed, > 99% (HPLC)
 Formula : $C_{30}H_{30}N_4O_2$
 M.W. : 478.58 g/mole
 UV : 292 nm (in THF)
 PL : 347 nm (in THF)
 TGA : > 290 °C (0.5% weight loss)
 Solvent : Toluene, Chloroform

Reference : *Journal of the Society for Information Display*, Volume 19, Issue 4, pages 346-352, April 2011

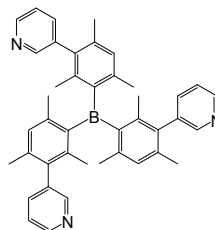


LT-N856 | 3TPYMB

Tris(2,4,6-trimethyl-3-(pyridin-3-yl)phenyl)borane

CAS No. : 929203-02-1
 Grade : Sublimed, > 99% (HPLC)
 Formula : $C_{42}H_{42}BN_3$
 M.W. : 599.61 g/mole
 UV : 331 nm (in THF)
 PL : 382 nm (in THF)
 TGA : > 230 °C (0.5% weight loss)
 Solvent : Toluene, Chloroform

Reference : *Chemistry Letters*. Vol. 36, No. 2, P262, 2007.

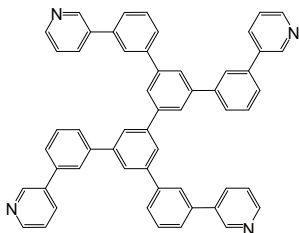


LT-N862 | BP4mPy

3,3',5,5'-Tetra(*m*-pyridyl)-phen-3-yl]biphenyl

CAS No. : 1009033-94-6
 Grade : Sublimed, > 99% (HPLC)
 Formula : $C_{26}H_{18}N_4$
 M.W. : 766.93 g/mole
 UV : 253 nm (in THF)
 PL : 352 nm (in THF)
 TGA : > 370 °C (0.5% weight loss)
 Solvent : Toluene, Chloroform

Reference : *Org. Lett.*, 2008, 10(5), p941-944.

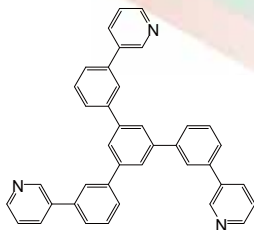


LT-N863 | TmPyPB

1,3,5-Tri[(3-pyridyl)-phen-3-yl]benzene

CAS No. : 921205-03-0
 Grade : Sublimed, > 99% (HPLC)
 Formula : $C_{39}H_{27}N_3$
 M.W. : 537.65 g/mole
 UV : 254 nm (in CH_2Cl_2)
 PL : 353 nm (in CH_2Cl_2)
 TGA : > 310 °C (0.5% weight loss)
 Solvent : Toluene, Chloroform

Reference : *J. Mater. Chem.*, 2012, 22, 4660-4668

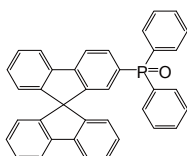


LT-N496 | SPPO1

9,9-Spirobifluoren-2-yl-diphenyl-phosphine oxide

CAS No. : 1125547-88-7
 Grade : Sublimed, > 99% (HPLC)
 Formula : $C_{37}H_{25}OP$
 M.W. : 516.57 g/mole
 UV : 307, 317 nm (in CH_2Cl_2)
 PL : 346 nm (in CH_2Cl_2)
 TGA : > 290 °C (0.5% weight loss)
 Solvent : Toluene, Chloroform

Reference : *Electrochem. Solid-State Lett.* 2011, Volume 14, Issue 1, Pages H33-H35.

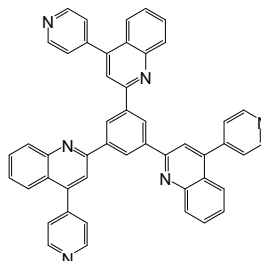


LT-N879 | TPYQB

1,3,5-Tris(4-(pyridin-4-yl)quinolin-2-yl)benzene

CAS No. : 1350742-68-5
 Grade : Sublimed, > 99% (HPLC)
 Formula : $C_{48}H_{30}N_6$
 M.W. : 690.79 g/mole
 PL : 381 nm (in CH_2Cl_2)
 TGA : > 400 °C (0.5% weight loss)
 Solvent : Toluene, Chloroform

Reference : *Adv. Funct. Mater.* 2011, 21, 3889-3899

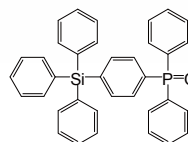


LT-N4048 | TSPO1

Diphenyl-4-triphenylsilylphenyl-phosphine oxide

CAS No. : 1286708-86-8
 Grade : Sublimed, > 99% (HPLC)
 Formula : $C_{36}H_{29}OPSi$
 M.W. : 536.67 g/mole
 UV : 266 nm (in CH_2Cl_2)
 PL : 298 nm (in CH_2Cl_2)
 TGA : > 420 °C (0.5% weight loss)
 Solvent : Toluene, Chloroform

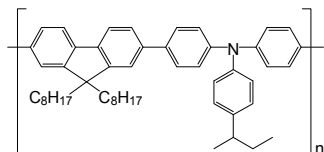
Reference : *Organic Electronics* 12 (2011) 1711-1715



LT-N148 | TFB

Poly[(9,9-dioctylfluorenyl-2,7-diyl)-co-(4,4'-(N-(4-sec-butylphenyl) diphenylamine)]

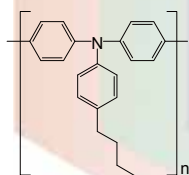
CAS No. : 220797-16-0
 Grade : $M_w > 30,000$ (GPC)
 Formula : $(C_{51}H_{61}N)_n$
 UV : 389 nm (in CH_2Cl_2)
 PL : 443 nm (in CH_2Cl_2)
 Solubility : Soluble in CH_2Cl_2 , Toluene, $CHCl_3$
 Reference : *Synthetic Metals* 160 (2010) 2393-2396



LT-N149 | Poly-TPD

Poly[N,N'-bis(4-butylphenyl)-N,N'-bis(phenyl)-benzidine]

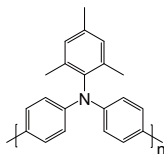
CAS No. : 472960-35-3
 Grade : $M_w > 10000$ (GPC)
 Formula : $(C_{22}H_{21}N)_n$
 UV : 371,388 nm (in CH_2Cl_2)
 PL : 424 nm (in CH_2Cl_2)
 Solubility : Soluble in $CHCl_3$, Chlorobenzene
 Reference : *J. Mater. Chem.*, 2012, 22, 22769-22773



LT-N168 | PTAA

Poly[bis(4-phenyl)(2,4,6-trimethylphenyl)amine]

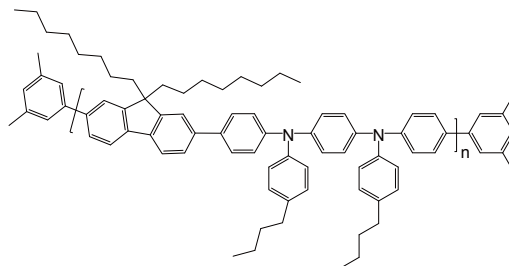
CAS No. : 1333317-99-9
 Grade : $M_w > 10,000$ (GPC)
 Formula : $(C_{21}H_{19}N)_n$
 UV : 371,388 nm (in CH_2Cl_2)
 PL : 424 nm (in CH_2Cl_2)
 Solubility : Soluble in $CHCl_3$,
 Chlorobenzene, Dichlorobenzene



LT-N169

Poly[(9,9-dioctylfluorenyl-2,7-diyl)-co-(N,N'-diphenyl)-N,N'-di(p-butylphenyl)-1,4-diamino-benzene] end capped with dimethylphenyl

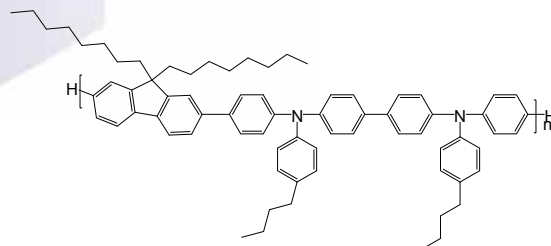
Grade : $M_w > 10,000$ (GPC)
 Formula : $C_{16}H_{18}(C_{67}H_{78}N_2)$
 UV : 380 nm (in THF)
 PL : 494 nm (in THF)
 Solubility : Soluble in $CHCl_3$,
 Chlorobenzene, Dichlorobenzene



LT-N170

Poly[(9,9-dioctylfluorenyl-2,7-diyl)-alt-co-(N,N'-bis(4-butylphenyl)-benzidine-N,N'-(1,4-diphenylene)]

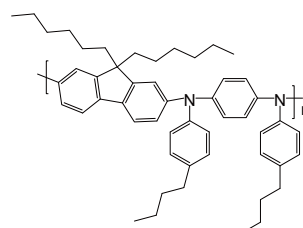
Grade : $M_w > 10,000$ (GPC)
 Formula : $C_{73}H_{82}N_2$
 UV : 380 nm (in THF)
 PL : 435 nm (in THF)
 Solubility : Soluble in $CHCl_3$,
 Chlorobenzene, Dichlorobenzene



LT-N171

Poly[(9,9-dihexylfluorenyl-2,7-diyl)-alt-(N,N'-bis(p-butylphenyl)-1,4-diaminophenylene)]

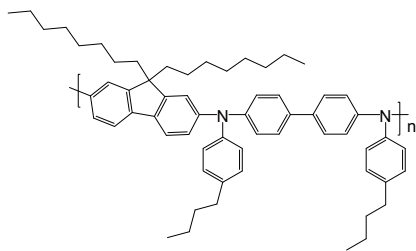
CAS No. : 870517-32-1
 Grade : $M_w > 10,000$ (GPC)
 Formula : $(C_{51}H_{62}N_2)_n$
 UV : 398 nm (in THF)
 PL : 425 nm (in THF)
 Solubility : Soluble in $CHCl_3$,
 Chlorobenzene, Dichlorobenzene



LT-N172

Poly[(9,9-dioctylfluorenyl-2,7-diyl)-*alt*-(*N,N'*-bis(*p*-butylphenyl)-1,1'-biphenylene-4,4'-diamine)]

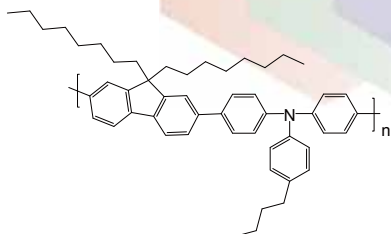
CAS No. : 1115424-53-7
 Grade : $M_w > 10,000$ (GPC)
 Formula : $(C_{61}H_{74}N_2)_n$
 UV : 397 nm (in THF)
 PL : 420 nm (in THF)
 Solubility : Soluble in $CHCl_3$,
 Chlorobenzene, Dichlorobenzene



LT-N174

Poly[(9,9-dioctylfluorenyl-2,7-diyl)-*co*-(4,4'-(*N*-(*p*-butylphenyl))diphenylamine)]

CAS No. : 223569-31-1
 Grade : $M_w > 30,000$ (GPC)
 Formula : $(C_{51}H_{61}N)_n$
 UV : 385 nm (in THF)
 PL : 434 nm (in THF)
 Solubility : Soluble in $CHCl_3$,
 Chlorobenzene, Dichlorobenzene



LT-PS001 PEDOT:PSS

Poly(3,4-ethylenedioxythiophene)-poly(styrenesulfonate)

Specification

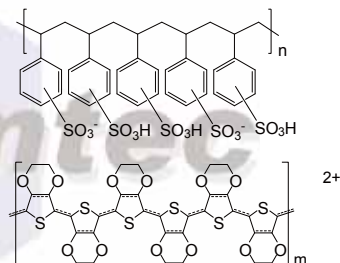
Description : Aqueous dispersion, blue liquid.
 Sodium : Max. 400 ppm
 Sulfate : Max. 40 ppm
 Solid content : 1.3 - 1.7 wt%
 PSD d_{50} : 80 nm
 PSD d_{90} : 100 nm
 Resistivity : 500-5000 Ω cm
 Viscosity : 5-12 mPas

Technical Data (guide values, not a specification)

Form : liquid
 Odour : odourless
 Colour : dark blue
 PEDOT:PSS ratio : 1:6 (by weight)
 PEDOT work function : approx 5.2 eV
 pH : 1.2 - 2.2 at 20°C
 Boiling Point : approx 100°C

Storage: The product is sensitive to frost and should therefore not be stored at temperatures below 5°C.

Avoid freezing!

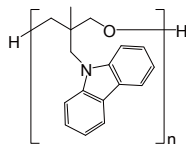


LT-N4037 | PCMO

Poly[3-(carbazol-9-ylmethyl)-3-methyloxetane]

Grade : $M_w > 10,000$ (GPC)
 Formula : $(C_{17}H_{17}NO)_n$
 UV : 237, 263 nm (in CH_2Cl_2)
 Solubility : Soluble in $CHCl_3$,
 Chlorobenzene, Dichlorobenzene

Reference : *J. Mater. Chem.*, 2011, 21, 9546-9552

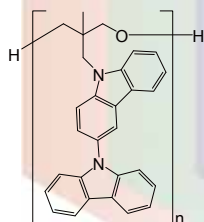


LT-N4038 | PCOC

Poly[3-(carbazol-9-yl)-9-(3-methyloxetan-3-ylmethyl)carbazole]

Grade : $M_w > 10,000$ (GPC)
 Formula : $(C_{29}H_{24}N_2O)_n$
 UV : 238, 265 nm (in CH_2Cl_2)
 PL : 382 nm (in CH_2Cl_2)
 Solubility : Soluble in $CHCl_3$,
 Chlorobenzene, Dichlorobenzene

Reference : *J. Mater. Chem.*, 2011, 21, 9546-9552

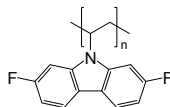


LT-N4062 | 2,7-F-PVF

Poly[9-sec-butyl-2,7-difluoro-9H-carbazole]

Grade : $M_w > 30,000$ (GPC)
 Formula : $(C_{14}H_9F_2N)_n$
 UV : 261, 294 nm (in CH_2Cl_2)
 PL : 397 nm (in CH_2Cl_2)
 Solubility : Soluble in $CHCl_3$,
 Chlorobenzene, Dichlorobenzene

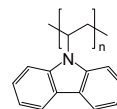
Reference : *J. Phys. Chem. C* 2012, 116, 20681-20687



LT-N4077 | PVK

Poly(9-vinylcarbazole)

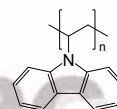
CAS No. : 25067-59-8
 Grade : $M_w > 20,000$ (GPC)
 Formula : $(C_{14}H_{11}N)_n$
 UV : 261, 294 nm (in CH_2Cl_2)
 PL : 380 nm (in THF)
 Solubility : Soluble in $CHCl_3$,
 Chlorobenzene, Dichlorobenzene



LT-N4078 | PVK

Poly(9-vinylcarbazole)

CAS No. : 25067-59-8
 Grade : $M_w > 100,000$ (GPC)
 Formula : $(C_{14}H_{11}N)_n$
 UV : 261, 294 nm (in CH_2Cl_2)
 PL : 380 nm (in THF)
 Solubility : Soluble in $CHCl_3$,
 Chlorobenzene, Dichlorobenzene

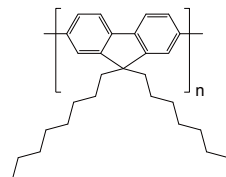


LT-S933 | PFO

Poly(9,9-dioctylfluorenyl-2,7-diyl)

CAS No. : 123864-00-6
 Grade : $M_w = 50,000 \sim 150,000$ (GPC)
 Formula : $(C_{29}H_{40})_n$
 UV : 376 nm (in THF)
 PL : 426 nm (in THF)
 Solubility : Soluble in $CHCl_3$,
 Chlorobenzene, Dichlorobenzene

Reference : *Appl. Phys. Lett.*, 2004, 85, 4576-4578

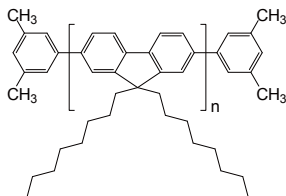


LT-S934 | PFO-DMP

Poly(9,9-dioctylfluorenyl-2,7-diyl) end capped with dimethylphenyl

CAS No. : 874816-14-5
 Grade : $M_w = 50,000 \sim 150,000$ (GPC)
 Formula : $C_{16}H_{18}(C_{29}H_{40})_n$
 UV : 368 nm (in THF)
 PL : 421 nm (in THF)
 Solubility : Soluble in $CHCl_3$, Chlorobenzene, Dichlorobenzene

Reference : *Appl. Phys. Lett.*, 2004, 85, 4576-4578

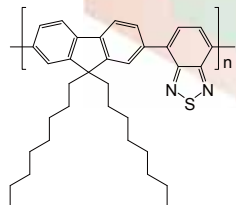


LT-S957 | F8BT

Poly[(9,9-dioctylfluorenyl-2,7-diyl)-alt-(benzo[2,1,3]thiadiazol-4,7-diyl)]

CAS No. : 210347-52-7
 Grade : $M_w > 20,000$
 Formula : $(C_{35}H_{42}N_2S)_n$
 UV : 453 nm (in THF)
 PL : 645 nm (in THF)
 Solubility : Soluble in $CHCl_3$, Chlorobenzene, Dichlorobenzene

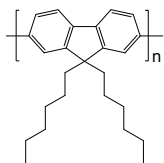
Reference : *Synthetic Metals*, 152, 105, 2005



LT-S958 | PHF

Poly(9,9-dihexylfluorenyl-2,7-diyl)

CAS No. : 201807-75-2
 Grade : $M_w = 50,000 \sim 150,000$ (GPC)
 Formula : $(C_{25}H_{32})_n$
 UV : 389 nm (in THF)
 PL : 418 nm (in THF)
 Solubility : Soluble in $CHCl_3$, Chlorobenzene, Dichlorobenzene

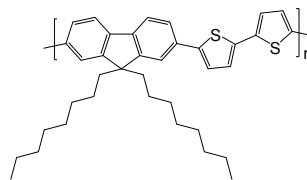


LT-S979 | P8T2

Poly[(9,9-di-n-octylfluorenyl-2,7-diyl)-alt-2,2'-bithiophene-5,5'-diyl]

CAS No. : 210347-56-1
 Grade : $M_w > 20,000$ (GPC)
 Formula : $(C_{37}H_{44}S_2)_n$
 UV : 454 nm (in THF)
 PL : 500 nm (in THF)
 Solubility : Soluble in $CHCl_3$, Chlorobenzene, Dichlorobenzene

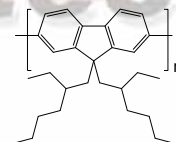
Reference : *Appl. Phys. Lett.* 87, 153511 (2005)



LT-S9004 |

Poly[9,9-bis(2-ethylhexyl)fluorenyl-2,7-diyl]

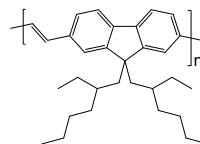
CAS No. : 188201-16-3
 Grade : $M_w > 20,000$ (GPC)
 Formula : $(C_{29}H_{40})_n$
 UV : 389 nm (in THF)
 PL : 418 nm (in THF)
 Solubility : Soluble in $CHCl_3$, Chlorobenzene, Dichlorobenzene



LT-A1007 |

Poly(9,9-di-(2-ethylhexyl)-9H-fluorene-2,7-vinylene)

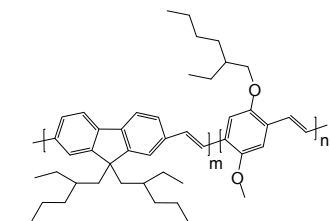
CAS No. : 1019638-19-7
 Grade : $M_w > 20,000$ (GPC)
 Formula : $(C_{31}H_{42})_n$
 UV : 280 nm (in CH_2Cl_2)
 PL : 454 nm (in CH_2Cl_2)
 Solubility : Soluble in $CHCl_3$, Chlorobenzene, Dichlorobenzene



LT-A1008

Poly[(9,9-di-(2-ethylhexyl)-9H-fluorene-2,7-vinylene)-co-(2-methoxy-5-(2-ethylhexyloxy)-1,4-phenylenevinylene)]
(m:n=95:5 mole ratio)

Grade : $M_w > 20,000$ (GPC)
 Formula : $(C_{29}H_{38})_m(C_{17}H_{24}O_2)_n$
 UV : 280 nm (in CH_2Cl_2)
 PL : 510 nm (in CH_2Cl_2)
 Solubility : Soluble in $CHCl_3$,
 Chlorobenzene, Dichlorobenzene

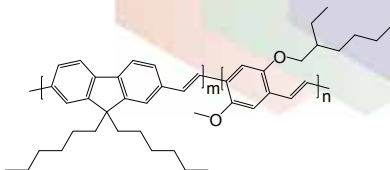


LT-A1009 Poly(FV-CO-MEHPV)

Poly[(9,9-dihexyl-9H-fluorene-2,7-vinylene)-co-(1-methoxy-4-(2-ethylhexyloxy)-2,5-phenylenevinylene)]
(m:n=95:5 mole ratio)

Grade : $M_w > 20,000$ (GPC)
 Formula : $(C_{27}H_{34})_m(C_{17}H_{24}O_2)_n$
 UV : 280 nm (in CH_2Cl_2)
 PL : 500 nm (in CH_2Cl_2)
 Solubility : Soluble in $CHCl_3$,
 Chlorobenzene, Dichlorobenzene

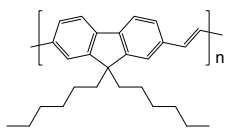
Reference : *Macromolecules*, 2003, 36 (11), pp 3841-3847



LT-A1010

Poly(9,9-di-n-hexylfluorenyl-2,7-vinylene)

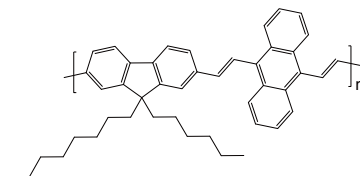
CAS No. : 203927-82-6
 Grade : $M_w > 20,000$ (GPC)
 Formula : $(C_{27}H_{34})_n$
 UV : 373 nm (in CH_2Cl_2)
 PL : 454 nm (in CH_2Cl_2)
 Solubility : Soluble in $CHCl_3$,
 Chlorobenzene, Dichlorobenzene



LT-A1011

Poly[(9,9-dioctyl-2,7-divinylene-fluorenylene)-alt-(9,10-anthracene)]

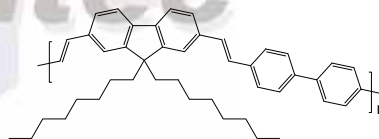
CAS No. : 474975-19-4
 Grade : $M_w > 20,000$ (GPC)
 Formula : $(C_{47}H_{52})_n$
 UV : 445 nm (in THF)
 PL : 556 nm (in THF)
 Solubility : Soluble in $CHCl_3$,
 Chlorobenzene, Dichlorobenzene



LT-A1012

Poly[(9,9-dioctyl-2,7-divinylene-fluorenylene)-alt-(4,4'-biphenylene)]

CAS No. : 474975-20-7
 Grade : $M_w > 20,000$ (GPC)
 Formula : $(C_{45}H_{52})_n$
 UV : 430 nm (in THF)
 PL : 448 nm (in THF)
 Solubility : Soluble in $CHCl_3$,
 Chlorobenzene, Dichlorobenzene

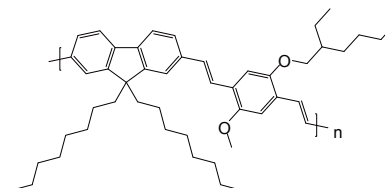


LT-A1013 PEPV

Poly[(9,9-dioctyl-2,7-divinylene-fluorenylene)-alt-(2-methoxy-5-(2-ethylhexyloxy)-1,4-phenylene)]

CAS No. : 475101-36-1
 Grade : $M_w > 30,000$ (GPC)
 Formula : $(C_{48}H_{66}O_2)_n$
 UV : 480 nm (in THF)
 PL : 539 nm (in THF)
 Solubility : Soluble in $CHCl_3$,
 Chlorobenzene, Dichlorobenzene

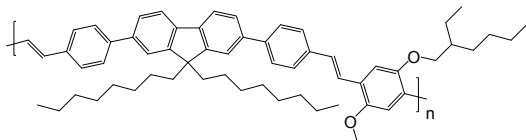
Reference : *J. Am. Chem. Soc.*, 2007, 129 (43), pp 12904-12905



LT-A1014

Poly[(9,9-dioctylfluorenyl-2,7-diyl)-co-(1,4-diphenylene-vinylene-2-methoxy-5-(2-ethylhexyloxy)-benzene)]

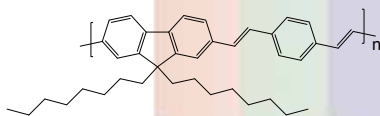
CAS No. : 577705-37-4
 Grade : $M_w > 30,000$ (GPC)
 Formula : $(C_{60}H_{74}O_2)_n$
 UV : 426 nm (in THF)
 PL : 466 nm (in THF)
 Solubility : Soluble in $CHCl_3$, Chlorobenzene, Dichlorobenzene



LT-A1015

Poly[(9,9-dioctyl-2,7-divinylfluorenylene)-alt-(1,4-phenylene)]

CAS No. : 579505-60-5
 Grade : $M_w > 30,000$ (GPC)
 Formula : $(C_{39}H_{48})_n$
 UV : 456 nm (in THF)
 PL : 495 nm (in THF)
 Solubility : Soluble in $CHCl_3$, Chlorobenzene, Dichlorobenzene

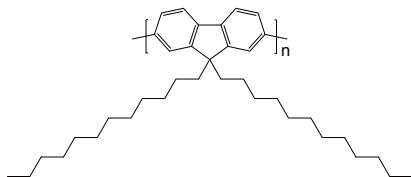


LT-A1016

Poly(9,9-di-n-dodecylfluorenyl-2,7-diyl)

CAS No. : 248256-53-3
 Grade : $M_w > 40,000$ (GPC)
 Formula : $(C_{37}H_{56})_n$
 UV : 369 nm (in CH_2Cl_2)
 PL : 421 nm (in CH_2Cl_2)
 Solubility : Soluble in $CHCl_3$, Chlorobenzene, Dichlorobenzene

Reference : Sensors, 2010 IEEE, 2603-2606

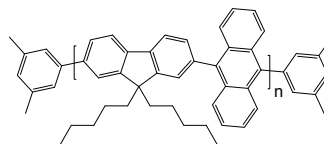


LT-A1017

Poly[(9,9-dihexylfluorene-2,7-diyl)-co-(anthracene-9,10-diyl)] end capped with dimethylphenyl

Grade : $M_w > 10,000$ (GPC)
 Formula : $C_{16}H_{18}(C_{39}H_{40})_n$
 UV : 375 nm (in CH_2Cl_2)
 PL : 440 nm (in CH_2Cl_2)
 Solubility : Soluble in $CHCl_3$, Chlorobenzene, Dichlorobenzene

Reference : Nano Lett., 2007, 7 (10), pp 3013-3017

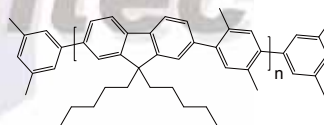


LT-A1018

Poly[(9,9-dihexylfluorene-2,7-diyl)-alt-(2,5-dimethyl-1,4-phenylene)] end capped with dimethylphenyl

CAS No. : 579505-48-9
 Grade : $M_w > 20,000$ (GPC)
 Formula : $C_{16}H_{18}(C_{33}H_{48})_n$
 UV : 330 nm (in CH_2Cl_2)
 PL : 378 nm (in CH_2Cl_2)
 Solubility : Soluble in $CHCl_3$, Chlorobenzene, Dichlorobenzene

Reference : Nanotechnology, 2012, 23(7), 075701

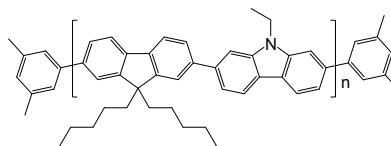


LT-A1019

Poly[(9,9-dihexylfluorene-2,7-diyl)-co-(9-ethylcarbazol-2,7-diyl)] end capped with dimethylphenyl

Grade : $M_w > 20,000$ (GPC)
 Formula : $C_{16}H_{18}(C_{39}H_{43}N)_n$
 UV : 374 nm (in CH_2Cl_2)
 PL : 417 nm (in CH_2Cl_2)
 Solubility : Soluble in $CHCl_3$, Chlorobenzene, Dichlorobenzene

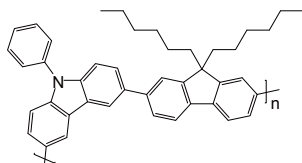
Reference : Journal of Power Sources 246, 2014, 184-191



LT-A1020

Poly(9,9-n-dioctyl-2,7-fluorene-*alt*-9-phenyl-3,6-carbazole)

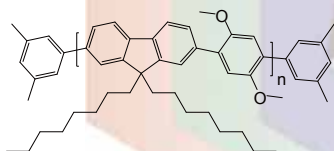
CAS No. : 856893-75-9
 Grade : $M_w > 30,000$ (GPC)
 Formula : $(C_{42}H_{43}N)_n$
 UV : 333 nm (in CH_2Cl_2)
 PL : 398 nm (in CH_2Cl_2)
 Solubility : Soluble in $CHCl_3$, Chlorobenzene, Dichlorobenzene



LT-A1021

Poly[(9,9-dioctylfluorenyl-2,7-diyl)-*co*-(1,4-(2,5-dimethoxy)benzene)] end capped with dimethylphenyl

Grade : $M_w > 20,000$ (GPC)
 Formula : $C_{16}H_{18}(C_{37}H_{48}O_2)_n$
 UV : 369 nm (in THF)
 PL : 410 nm (in THF)
 Solubility : Soluble in $CHCl_3$, Chlorobenzene, Dichlorobenzene

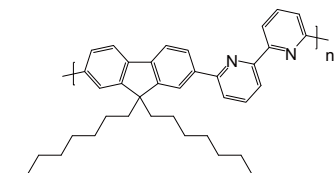


LT-A1023 PFO-BPy

Poly[(9,9-dioctylfluorenyl-2,7-diyl)-*alt*-(6,6'-(2,2'-bipyridine))]

CAS No. : 1423043-97-3
 Grade : $M_w > 10,000$ (GPC)
 Formula : $(C_{39}H_{46}N_2)_n$
 UV : 360 nm (in THF)
 PL : 410 nm (in THF)
 Solubility : Soluble in $CHCl_3$, Chlorobenzene, Dichlorobenzene

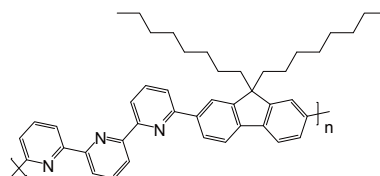
Reference : *ACS Nano*, 2013, 7(3), pp 2231-2239



LT-A1024

Poly[(9,9-dioctylfluorenyl-2,7-diyl)-*alt*-(6,6'-(2,2':6',2''-terpyridine))]

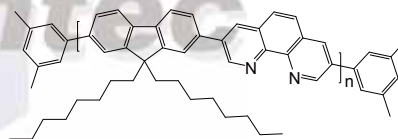
CAS No. : 934690-41-2
 Grade : $M_w > 20,000$ (GPC)
 Formula : $(C_{44}H_{49}N_3)_n$
 UV : 347 nm (in THF)
 PL : 368 nm (in THF)
 Solubility : Soluble in $CHCl_3$, Chlorobenzene, Dichlorobenzene



LT-A1025

Poly[(9,9-dioctyl-2,7-fluorenylene)-*co*-(3,8-phenanthroline)] end capped with dimethylphenyl

Grade : $M_w > 30,000$ (GPC)
 Formula : $C_{16}H_{18}(C_{41}H_{46}N_2)_n$
 UV : 388 nm (in THF)
 PL : 410 nm (in THF)
 Solubility : Soluble in $CHCl_3$, Chlorobenzene, Dichlorobenzene

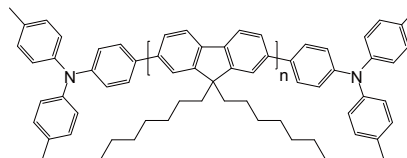


LT-A1026

Poly[9,9-dioctylfluorenyl-2,7-diyl] end capped with *N,N*-Bis(4-methylphenyl)-aniline

Grade : $M_w > 20,000$ (GPC)
 Formula : $C_{40}H_{36}N_2(C_{30}H_{42})_n$
 UV : 393 nm (in THF)
 PL : 412 nm (in THF)
 Solubility : Soluble in $CHCl_3$, Chlorobenzene, Dichlorobenzene

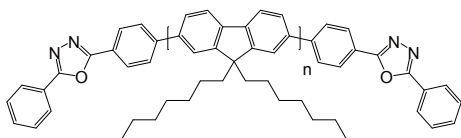
Reference : *New J. Phys.* 2004, 6, 185



LT-A1027

Poly[9,9-dioctylfluorenyl-2,7-diyl] end capped with 2,5-diphenyl-1,2,4-oxadiazole

Grade : $M_w > 20,000$ (GPC)
 Formula : $C_{28}H_{18}N_4O_2(C_{30}H_{42})_n$
 UV : 393 nm (in THF)
 PL : 412 nm (in THF)
 Solubility : Soluble in $CHCl_3$,
 Chlorobenzene, Dichlorobenzene



LT-A1028

Poly[9,9-di-(2-ethylhexyl)-fluorenyl-2,7-diyl] end capped with 2,5-diphenyl-1,2,4-oxadiazole

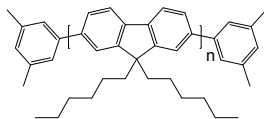
Grade : $M_w > 10,000$ (GPC)
 Formula : $C_{28}H_{18}N_4O_2(C_{30}H_{42})_n$
 UV : 393 nm (in THF)
 PL : 412 nm (in THF)
 Solubility : Soluble in $CHCl_3$,
 Chlorobenzene, Dichlorobenzene



LT-A1029

Poly[9,9-dihexylfluorenyl-2,7-diyl] end capped with dimethylphenyl

CAS No. : 1010129-39-1
 Grade : $M_w = 50,000 \sim 150,000$ (GPC)
 Formula : $C_{16}H_{18}(C_{25}H_{32})_n$
 UV : 393 nm (in THF)
 PL : 412 nm (in THF)
 Solubility : Soluble in $CHCl_3$,
 Chlorobenzene, Dichlorobenzene

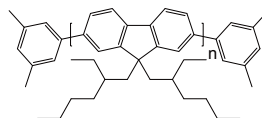


LT-A1030

Poly[9,9-di-(2-ethylhexyl)-fluorenyl-2,7-diyl] end capped with dimethylphenyl

Grade : $M_w > 20,000$ (GPC)
 Formula : $C_{16}H_{18}(C_{29}H_{40})_n$
 UV : 393 nm (in THF)
 PL : 412 nm (in THF)
 Solubility : Soluble in $CHCl_3$,
 Chlorobenzene, Dichlorobenzene

Reference : *Chin. J. Chem.* 2010, 28, 1482-1486

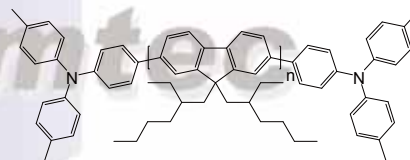


LT-A1031

Poly[9,9-di-(2-ethylhexyl)-fluorenyl-2,7-diyl] end capped with N,N-Bis(4-methylphenyl)-aniline

Grade : $M_w > 10,000$ (GPC)
 Formula : $C_{40}H_{36}N_2(C_{30}H_{42})_n$
 UV : 393 nm (in THF)
 PL : 412 nm (in THF)
 Solubility : Soluble in $CHCl_3$,
 Chlorobenzene, Dichlorobenzene

Reference : *Chin. J. Chem.* 2010, 28, 1482-1486

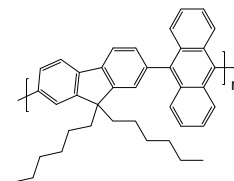


LT-A1032 PFH-A

Poly[(9,9-dihexylfluorenyl-2,7-diyl)-co-(9,10-anthracene)]

CAS No. : 474975-22-9
 Grade : $M_w > 10,000$ (GPC)
 Formula : $(C_{39}H_{40})_n$
 UV : 375 nm (in THF)
 PL : 440 nm (in THF)
 Solubility : Soluble in $CHCl_3$,
 Chlorobenzene, Dichlorobenzene

Reference : *Nano Lett.*, 2007, 7 (10), pp 3013-3017

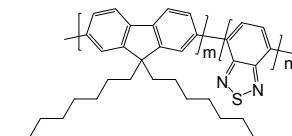


LT-A1033

Poly[(9,9-dioctylfluorenyl-2,7-diyl)-*co*-(1,4-benzo-[2,1',3]-thiadiazole)] (m:n=95:5 mole ratio)

Grade : $M_w > 20,000$ (GPC)
 Formula : $(C_{29}H_{40})_m(C_6H_4N_2S)_n$
 UV : 386 nm (in THF)
 PL : 535 nm (in THF)
 Solubility : Soluble in $CHCl_3$,
 Chlorobenzene, Dichlorobenzene

Reference : *ACS Nano*, 2011, 5(2), pp 1468-1475

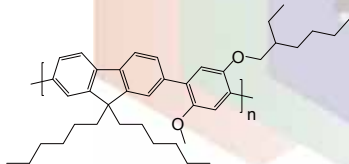


LT-A1034

Poly[(9,9-dihexylfluorenyl-2,7-diyl)-*alt*-(2-methoxy-5-(2-ethylhexyloxy)-1,4-phenylene)]

CAS No. : 475102-99-9
 Grade : $M_w > 30,000$ (GPC)
 Formula : $(C_{40}H_{54}O_2)_n$
 UV : 366 nm (in THF)
 PL : 410 nm (in THF)
 Solubility : Soluble in $CHCl_3$,
 Chlorobenzene, Dichlorobenzene

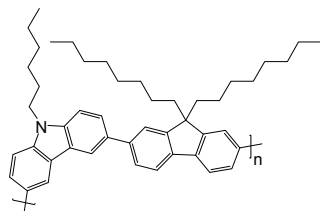
Reference : *Journal of Nanoscience and Nanotechnology*, 2012, Vol.12, pp 5407-5411



LT-A1035

Poly[(9,9-dioctylfluorenyl-2,7-diyl)-*alt*-(9-hexyl-3,6-carbazole)]

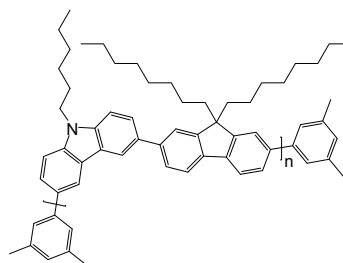
Grade : $M_w > 10,000$ (GPC)
 Formula : $(C_{47}H_{60}N)_n$
 UV : 360 nm (in THF)
 PL : 410 nm (in THF)
 Solubility : Soluble in $CHCl_3$,
 Chlorobenzene, Dichlorobenzene



LT-A1036

Poly[(9,9-dioctylfluorenyl-2,7-diyl)-*co*-(9-hexyl-3,6-carbazole)] end capped with dimethylphenyl

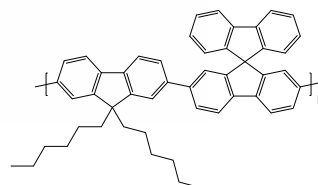
Grade : $M_w > 10,000$ (GPC)
 Formula : $C_{16}H_{18}(C_{47}H_{60}N)_n$
 UV : 364 nm (in THF)
 PL : 412 nm (in THF)
 Solubility : Soluble in $CHCl_3$,
 Chlorobenzene, Dichlorobenzene



LT-A1037

Poly[(9,9-dihexylfluorenyl-2,7-diyl)-*alt*-(9,9'-spiro-bifluorene-2,7-diyl)]

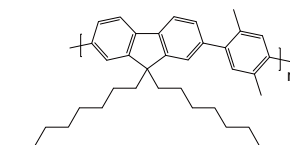
CAS No. : 474975-24-1
 Grade : $M_w > 20,000$ (GPC)
 Formula : $(C_{50}H_{46})_n$
 UV : 380 nm (in THF)
 PL : 410 nm (in THF)
 Solubility : Soluble in $CHCl_3$,
 Chlorobenzene, Dichlorobenzene



LT-A1038

Poly[(9,9-dioctylfluorenyl-2,7-diyl)-*co*-(2,5-p-xylene)]

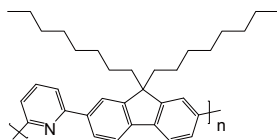
CAS No. : 1687752-52-8
 Grade : $M_w > 20,000$ (GPC)
 Formula : $(C_{37}H_{48})_n$
 UV : 335 nm (in THF)
 PL : 400 nm (in THF)
 Solubility : Soluble in $CHCl_3$,
 Chlorobenzene, Dichlorobenzene



LT-A1039

Poly[(9,9-dioctylfluorenyl-2,7-diyl)-*alt*-(2,6-pyridine)]

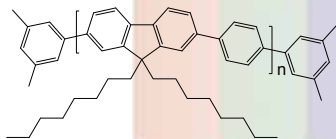
CAS No. : 773895-96-8
Grade : $M_w > 20,000$ (GPC)
Formula : $(C_{34}H_{43}N)_n$
UV : 364 nm (in THF)
PL : 406 nm (in THF)
Solubility : Soluble in $CHCl_3$,
Chlorobenzene, Dichlorobenzene



LT-A1040

Poly[(9,9-dioctylfluorenyl-2,7-diyl)-*co*-(1,4-phenylene)]
end capped with dimethylphenyl

CAS No. : 1025775-95-4
Grade : $M_w > 30,000$ (GPC)
Formula : $C_{16}H_{18}(C_{35}H_{44})_n$
UV : 377 nm (in THF)
PL : 405 nm (in THF)
Solubility : Soluble in $CHCl_3$,
Chlorobenzene, Dichlorobenzene

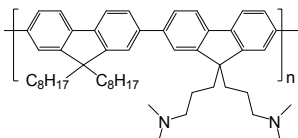


Lumtec

LT-N4027 | PFN-DOF

Poly[(9,9-bis(3'-(*N,N*-dimethylamino)propyl)-2,7-fluorene)-*alt*-2,7-(9,9-dioctylfluorene)]

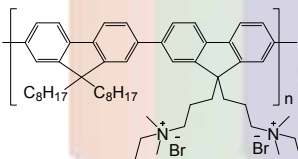
CAS No. : 673474-75-4
 Grade : $M_w > 10,000$ (GPC)
 Formula : $(C_{52}H_{70}N_2)_n$
 UV : 378 nm (in CH_2Cl_2)
 PL : 414 nm (in CH_2Cl_2)
 Solubility : Soluble in CH_2Cl_2 , $CHCl_3$, Toluene
 Reference : *Chem. Mater.*, Vol. 16, No. 4, 2004



LT-N878 | PFNBr

Poly[(9,9-bis(3'-(*N,N*-dimethyl)-*N*-ethylammonium)propyl)-2,7-fluorene)-*alt*-2,7-(9,9-dioctylfluorene)]

Grade : $M_w > 10,000$ (GPC)
 Formula : $(C_{56}H_{80}N_2Br_2)_n$
 UV : 375 nm (in MeOH)
 PL : 440 nm (in MeOH)
 Solubility : Soluble in MeOH
 Reference : *Chem. Mater.*, 2004, 16, 708



Lumtec