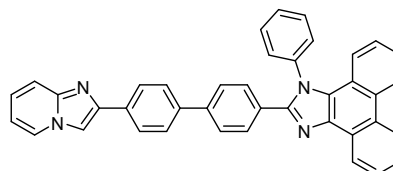


Imidazo[1,2-a]pyridine as an electron acceptor to construct high-performance deep-blue organic light-emitting diodes with negligible efficiency roll-off

Product Specifications

LT-N6056 IP-PPI

Grade	Sublimed, >99% (HPLC)
Formula	C ₄₀ H ₂₆ N ₄
M.W.	562.66 g/mole
PL	435 nm (film)
HOMO/LUMO	-5.44/-2.40 eV
T1	2.56 eV



* <https://doi.org/10.1002/chem.202000518>

Features

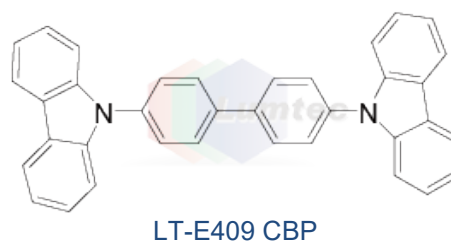
- The non-doped OLEDs based on IP-PPI showed EQE of 4.85% with CIE coordinates of (0.153, 0.097) and at 10000 cd m⁻².
- The 40 wt% IP-PPI doped device maintained efficient EQE of 5.23% with CIE coordinates of (0.154, 0.077) at 10000 cd m⁻².

Device Application

*Non-doped Device: ITO/MoO₃ (3nm)/TAPC (60 nm)/TCTA (7.5 nm)/IP-PPI (25 nm)/TPBI (40 nm)/LiF (0.8 nm)/Al (80 nm)

*Doped Device: ITO/MoO₃ (3 nm)/TAPC (60 nm)/TCTA (7.5 nm)/CBP: 40 wt% IP-PPI (22 nm)/TPBI (40 nm)/LiF (0.8 nm)/Al (80 nm)

Related products from Lumtec:



Materials are used by qualified for testing and research only, there are not guaranteed in patent contention by customer use.

Head office : 2F, No. 21, R&D Road II, Science-Based Industrial Park, Hsin-Chu 30076, Taiwan, R.O.C., TEL : +886-3-666-3188, FAX : +886-3-666-9288.

Taipei office : 9F., No.3, Park St., Nangang Dist., Taipei City 11503, Taiwan, R.O.C., TEL : +886-2-2655-8658, FAX : +886-2-2655-8699

新竹總公司 : 30076 新竹科學工業園區研發二路 21 號 2 樓, TEL : 03-666-3188, FAX : 03-666-9288.

台北分公司 : 11503 台北市南港區園區街 3 號 9 樓 B2, TEL : 02-2655-8658, FAX : 02-2655-8699.

E-mail : sales@lumtec.biz ; Web : <http://www.lumtec.com.tw>