

5" TFT LCD PORTABLE TEST MONITOR

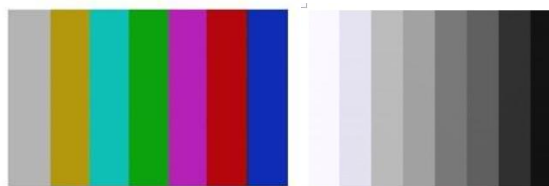


AV Input

AV Output

FEATURES

- OSD Menu Function
- VGA & AV Dual Input
- VGA Input Size Auto Adjustable.
- Maximum Pixels: 1600 x 1200 (VGA input)
- LCD Panel Resolution: 640 x (RGB) x 480 pixels
- Rechargeable Li-ion Battery
- Supply DC 12V/500mA power output to camera
- NTSC / PAL TV Signal Auto Recognition
- Audio Output Volume adjustable
- Video Output Test Pattern: Color Bar Chart & Gray Scale Chart (Test cable broken circuit, short circuit function)
- Mirror Function
- Low Battery Warning
- Auto Sleep Function Saving Power
- Language: English, French, Deutsch, Spanish, Chinese, Japanese
- Contrast, Bright, Sharpness, Color Adjustable
- Inclined plane design to avoid reflection



Color Bar Chart Test Pattern

Gray Scale Chart Test Pattern

SPECIFICATION

Model No.	LCDWM5
LCD	5" TFT LCD
Resolution	640 x (RGB) x480 pixels
VGA Input Resolution	MAX:1600 x 1200 (4:3) / MAX: 1920 x1080 (16:9)
Power	3.7V Rechargeable Li-ion Battery
Input TV System	NTSC / PAL Auto Switching.
AV Input	Ø3.5mm Phone Jack x 1
AV Output	Ø3.5mm Phone Jack x 1
VGA Input	D-SUB 15 Pin x 1
Battery Capacity	2300mA/4600mA
Power Input	DC 5V 1500mA
Power Output	DC 12V 500mA
Video Output Test Pattern	Color Bar Chart & Gray Scale Chart