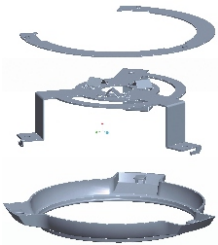


Various APPRO mounting brackets for the IP Dome

Flush mount



Actual sample



MK-1421

For APPRO LC-7331 Dome Series.
Dimensions (mm):166(R)x60(H)



Actual sample



MK-1427

For APPRO LC-7421, 7431, 7523, 7533, 7526, 7536 Dome Series.
Dimensions (mm):190(R)x75(H)

Gooseneck Arm mount



MK-1424A
Actual sample



MK-1424B
Actual sample



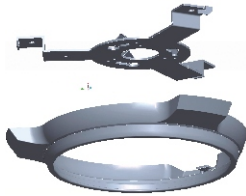
MK-1424A

For APPRO LC-7331 Dome Series.

MK-1424B

For APPRO LC-7421, 7431, 7523, 7533, 7526, 7536 Dome Series.
Dimensions (mm):253(L)x217(H)

Surface mount

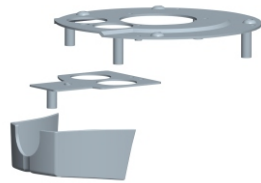


Actual sample



MK-1422

For APPRO LC-7331Dome Series.
Dimensions (mm):166(R)x25(H)



Actual sample



MK-1425

For APPRO LC-7421, 7431, 7523, 7533, 7526, 7536Dome Series.
Dimensions (mm):142(R)x40(H)

Corner mount



MK-1418

Optional : MK-1417A/B or MK-1428

Straight Tube

MK-1419-17 : 17cm
MK-1419-30 : 30cm
MK-1419-50 : 50cm
MK-1419-80 : 80cm
MK-1419-120 : 120cm



MK-1419

Optional : MK-1423A/B or MK-1424A/B

Pendant mount



MK-1423A
Actual sample



MK-1423B
Actual sample



MK-1423A

For APPRO LC-7331Dome Series.

MK-1423B

For APPRO LC-7421, 7431, 7523, 7533, 7526, 7536 Dome Series.
Dimensions (mm):149(R)x201(H)

Electrical Box for Pendant mount



Actual sample

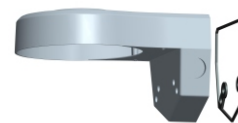


MK-1417A (NTSC system)

MK-1417B (PAL system)

For APPRO Dome Series.
Optional : MK-1423A or MK-1424A
Dimensions (mm):157(W)x155(L)x55(H)

Wall mount



Actual sample



MK-1428

For APPRO LC-7421, 7431, 7523, 7533, 7526, 7536 Dome Series.
Dimensions (mm):225(W)x160(D)x124(H)