

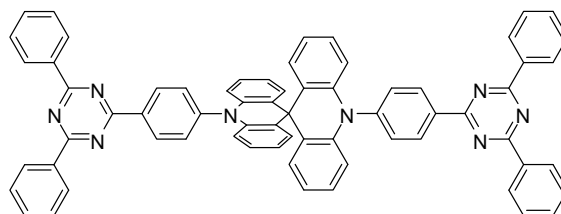


## Horizontally Orientated Sticklike Emitters: Enhancement of Intrinsic Out-Coupling Factor and Electroluminescence Performance

### Product Specifications

#### LT-N6026 TZ-SBA

<b>Name.</b>	10,10'-bis[4-(4,6-diphenyl-1,3,5-triazin-2-yl)phenyl]-9,9'-Spirobi[acridine]
<b>CAS No.</b>	2107977-57-9
<b>Grade</b>	Sublimed, >99 % (HPLC)
<b>Formula</b>	C <sub>67</sub> H <sub>44</sub> N <sub>8</sub>
<b>Molecular Weight</b>	961.12 g/mole
<b>Absorption</b>	290,340,400,480 nm (in Toluene)
<b>Emission</b>	500 nm (doped film)
<b>HOMO/LUMO</b>	-5.73 eV/ -2.92 eV
<b>ΔE<sub>ST</sub></b>	0.05 eV



\* Reference: *Chem. Mater.* **2017**, 29, 8630–8636

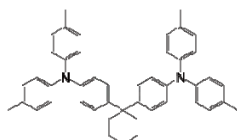
### Features

- By designing emitters as sticklike molecules, exhibiting a low turn-on voltage of 3.1V at 1 cd/m<sup>2</sup>, external quantum efficiency of 32.8% and power efficiency of 71.1, 47.6 lm/W at 100, 1000 cd/m<sup>2</sup>.

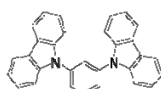
### Device Application

#### The Blue OLED Device:

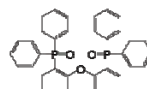
ITO (120 nm)/ triphenylamine-containing polymer:PPBI (20 nm)/ TAPC (20 nm)/ MCP (10 nm)/ 10wt% TZ-SBA: DPEPO (20 nm)/ DPEPO (10 nm)/ BmPyPhB (40 nm)/ LiF (0.5 nm)/ Al.



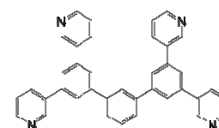
LT-N137 TAPC



LT-E107 MCP  
LiF = LT-E001



LT-N4060 DPEPO  
Al = LT-E005



LT-N865 BmPyPhB

Materials are used by qualified for testing and research only, there are not guaranteed in patent contention by customer use.

Head office: 31F-5, No. 99, Sec. 1, Xintai 5<sup>th</sup> Rd., Xizhi, New Taipei City 22175, Taiwan, R.O.C., TEL: +886-2-2697-5600, FAX: +886-2-2697-5601.

Factory I: 2F, No. 21, R&D Road II, Science-Based Industrial Park, Hsin-Chu 30076, Taiwan, R.O.C., TEL: +886-3-666-3188, FAX: +886-3-666-9288.

總公司: 22175 新北市汐止區新台五路一段 99 號 31 樓之 5, 電話: 02-2697-5600, 傳真: 02-2697-5601.

新竹廠: 30076 新竹科學工業園區研發二路 17 號 2 樓, 電話: 03-666-3188, 傳真: 03-666-9288.

E-mail: [sales@lumtec.com.tw](mailto:sales@lumtec.com.tw); Web: <http://www.lumtec.com.tw>