

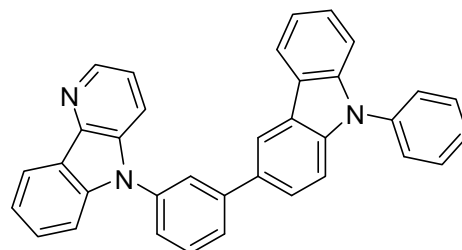


Manipulation of TADF of Blue Exciplex Emission: Fully Utilizing Exciton Energy for Highly Efficient OLEDs with Low Roll-Off

Product Specifications

LT-N4157 DCb-PCz

Name.	5-(3-(9-Phenyl-9H-carbazol-3-yl)phenyl)-5H-pyrido[3,2-b]indole
CAS No.	2099149-76-3
Grade	Sublimed, >99 % (HPLC)
Formula	C ₃₅ H ₂₃ N ₃
Molecular Weight	485.58 g/mole
Absorption	292,331,345 nm (in CH ₂ Cl ₂)
HOMO/LUMO	-5.75 eV/ -2.39 eV



* Reference: ACS Appl. Mater. Interfaces **2017**, 9, 21346–21354

Features

- Highly efficient blue PhOLEDs doped with FIrPic showed the PE of 44.6 lm/W, CE of 46.4 cd/A, and EQE of 24.6%.

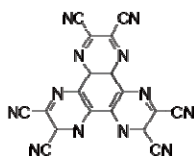
Device Application

The Blue PhOLEDs Device:

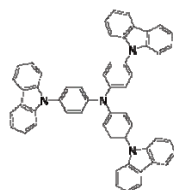
ITO/ HAT-CN (10 nm)/ NPB (10 nm)/ TcTa (5 nm)/ TcTa:DCb-PCz (1:1) (5 nm)/ DCb-PCz :FIrPic (20 nm, 8 wt%)/ TmPyPB (50 nm)/ Liq (1 nm)/ Al.



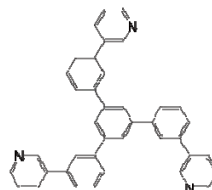
LT-E101 NPB



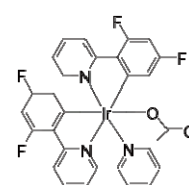
LT-N221 HAT-CN



LT-E207 TcTa



LT-N863 TmPyPB



LT-E607 FIrPic



Liq LT-E301

Al = LT-E005

Materials are used by qualified for testing and research only, there are not guaranteed in patent contention by customer use.

Head office: 31F-5, No. 99, Sec. 1, Xintai 5th Rd., Xizhi, New Taipei City 22175, Taiwan, R.O.C., TEL: +886-2-2697-5600, FAX: +886-2-2697-5601.

Factory I: 2F, No. 21, R&D Road II, Science-Based Industrial Park, Hsin-Chu 30076, Taiwan, R.O.C., TEL: +886-3-666-3188, FAX: +886-3-666-9288.

總公司: 22175 新北市汐止區新台五路一段 99 號 31 樓之 5, 電話: 02-2697-5600, 傳真: 02-2697-5601.

新竹廠: 30076 新竹科學工業園區研發二路 17 號 2 樓, 電話: 03-666-3188, 傳真: 03-666-9288.

E-mail: sales@lumtec.com.tw; Web: <http://www.lumtec.com.tw>