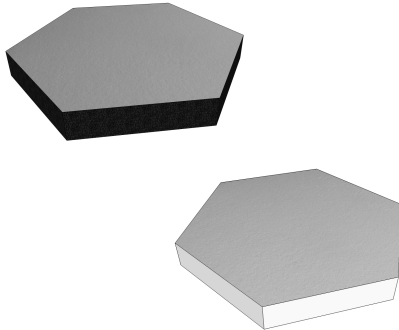


Vixagon Mini | Ceiling

Page 1 of 1 |



Required Apparatus:

- Vixagon Mini (Panel)
- Vicoustic Flexi Glue
- 1 x Glue Gun

Installation Instructions:

Wall surfaces should be examined prior to installation, ensuring they are clean, smooth, and dry.

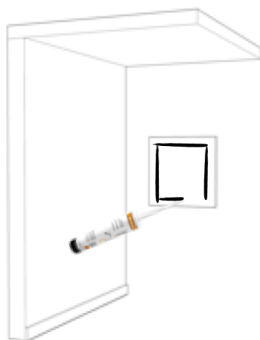
If you have unpainted gypsum board surfaces, these should be primed with a drywall primer (or another material manufactured especially for the purpose), to equalize the absorption between the gypsum board face paper, joint compound, and skin coating materials. You should then apply the paint, and allow air circulation in order to dry the paint within the time frame specified by the paint manufacturer. Please ensure the paint is dry before installing the acoustic panel.

Make sure the room has all the conditions necessary to receive the acoustic panels.

After you apply the glue on the back of each acoustic panel, please ensure you hold the acoustic panel on the wall the required time (mentioned below), and ensure it stays fixed in place.

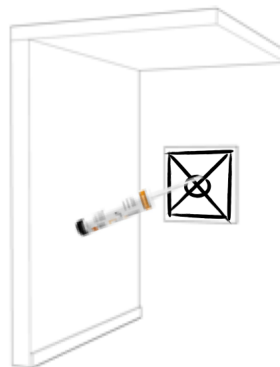
STEP 1

Apply Vicoustic Flexi Glue at the back of the acoustic panel, near the edges.



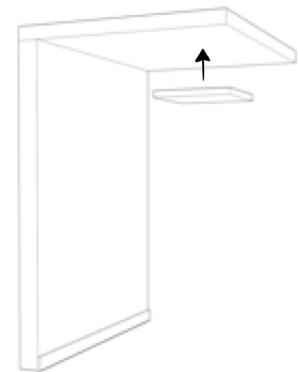
STEP 2

Apply Vicoustic Flexi Glue in the centre of the acoustic panel like shown on the image above.



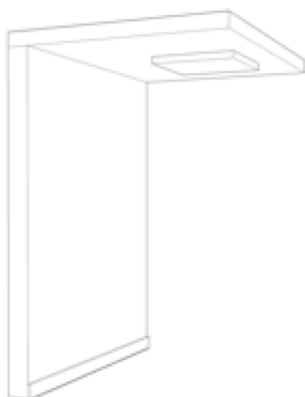
STEP 3

Apply the acoustic panel on the ceiling surface.



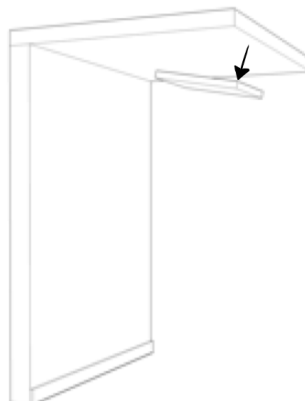
STEP 4

Leave the acoustic panel glued on the surface for 15 seconds.



STEP 5

Remove the acoustic panel slightly from the wall surface (approximately 2 cm) during 15 seconds.



STEP 6

Apply again the acoustic panel on the surface and hold for 1,5 minutes and ensure it stays fixed in place.

