



undici



PRODUCT MARKETING PLAN

Index



- **Design**
- **Dimensions**
- **Tecnology**
- **Technical and Functional**
- **Gamma & Coding**
- **Selling Points**
- **Benchmark Vs Dieci**

Design



Design



Design



Design



Design



Design



Design – variants color



Design – variants color



Design – variants color



Design – aesthetic elements

New key pad



Design – aesthetic elements



Front logo
customizable



Back logo
cistomizable

Design – aesthetic elements



water cooler in
stainless steel

New feet in inox steel

Design – aesthetic elements



New double range
gauge

New cover

Design Casadio Undici Vs Dieci



Undici



Dieci

Design Casadio Undici Vs Dieci





Dimension

CASADIO

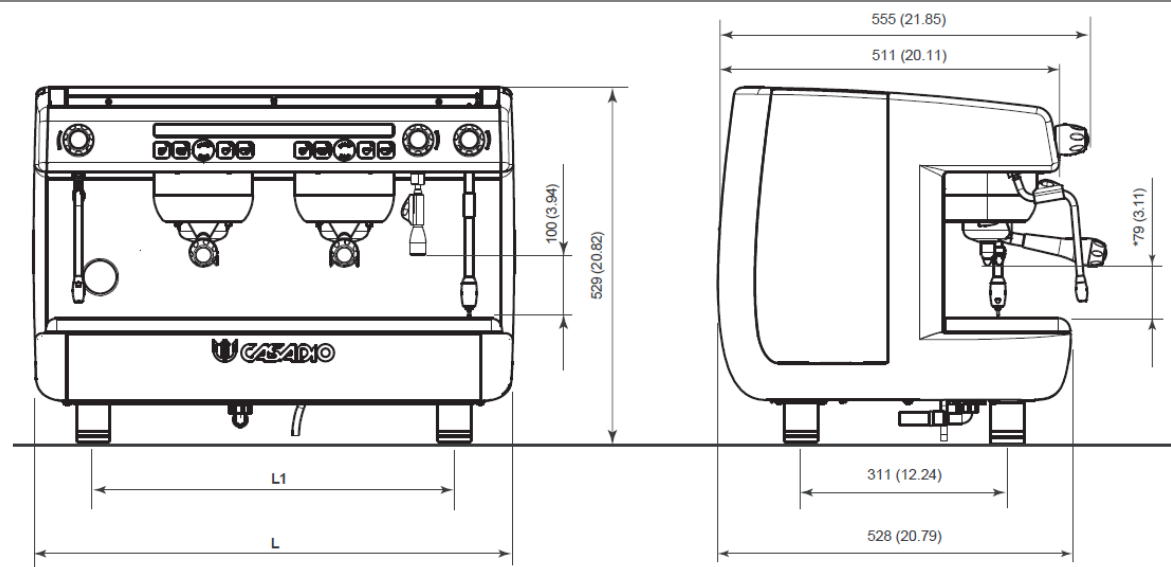
undici

CASADIO
GRUPPO CIMBALI

Dimension 2 groups

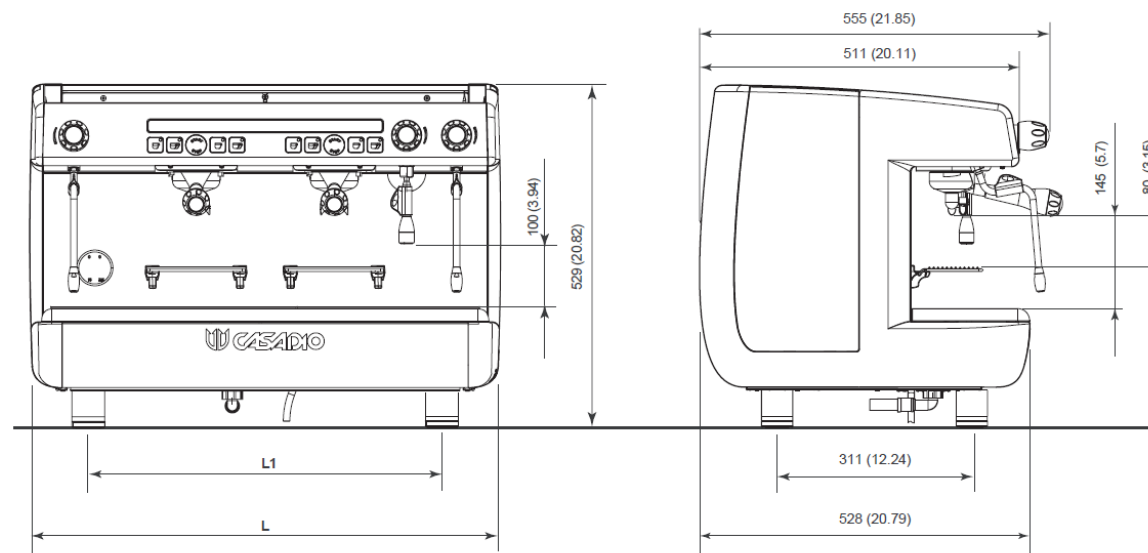
UNDICI 2 GR

width (mm)	depth (mm)	height (mm)	weight (kg)
716	528	529	50



UNDICI 2 GR TC

width (mm)	depth (mm)	height (mm)	weight (kg)
716	528	529	50



Steam boiler

The boiler and heat exchangers are in copper.

Tipe	Capacity (l)	Power supply	Heating elements
2 gr	10,5	Single phase 220-240V 50/60Hz	2700-3200 W

Power supply General: 220-240V 50/60Hz Power: 2,8 - 3,3 kW



Tecnology

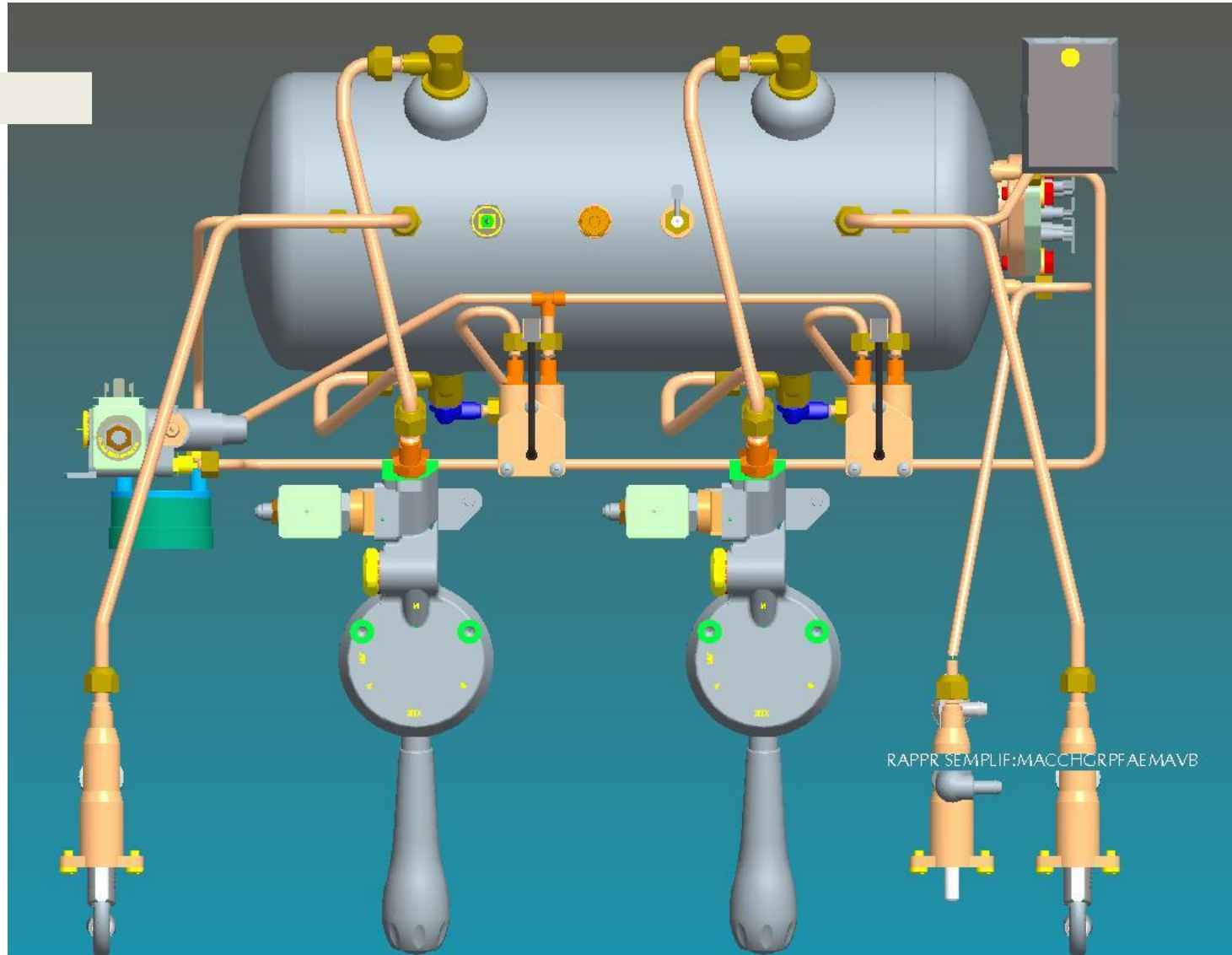
CASADIO

undici

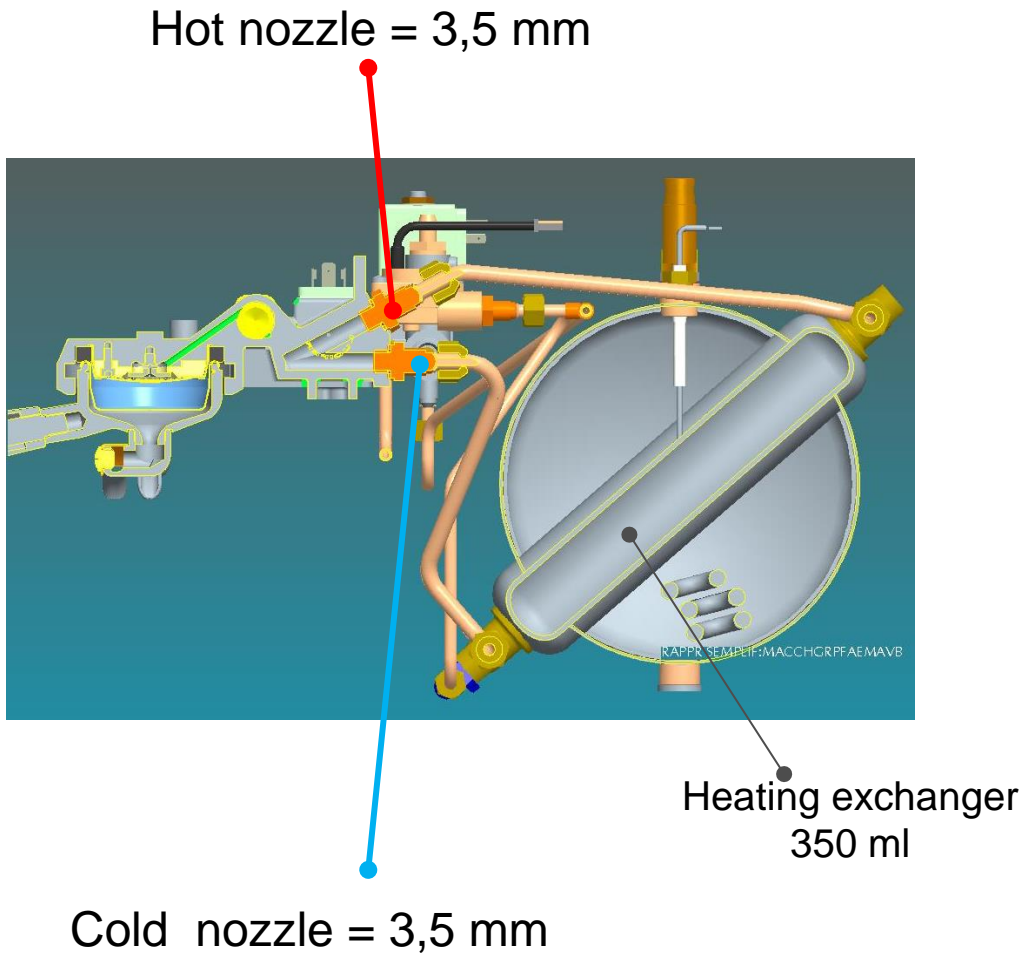
CASADIO
GRUPPO CIMBALI

Thermal

3D hydraulic circuit



Thermal



The group is heated through the thermosiphonic circulation.

The latter is established for the difference in water temperature between the upper part and the lower part inside the exchanger

(capacity: 350ml)

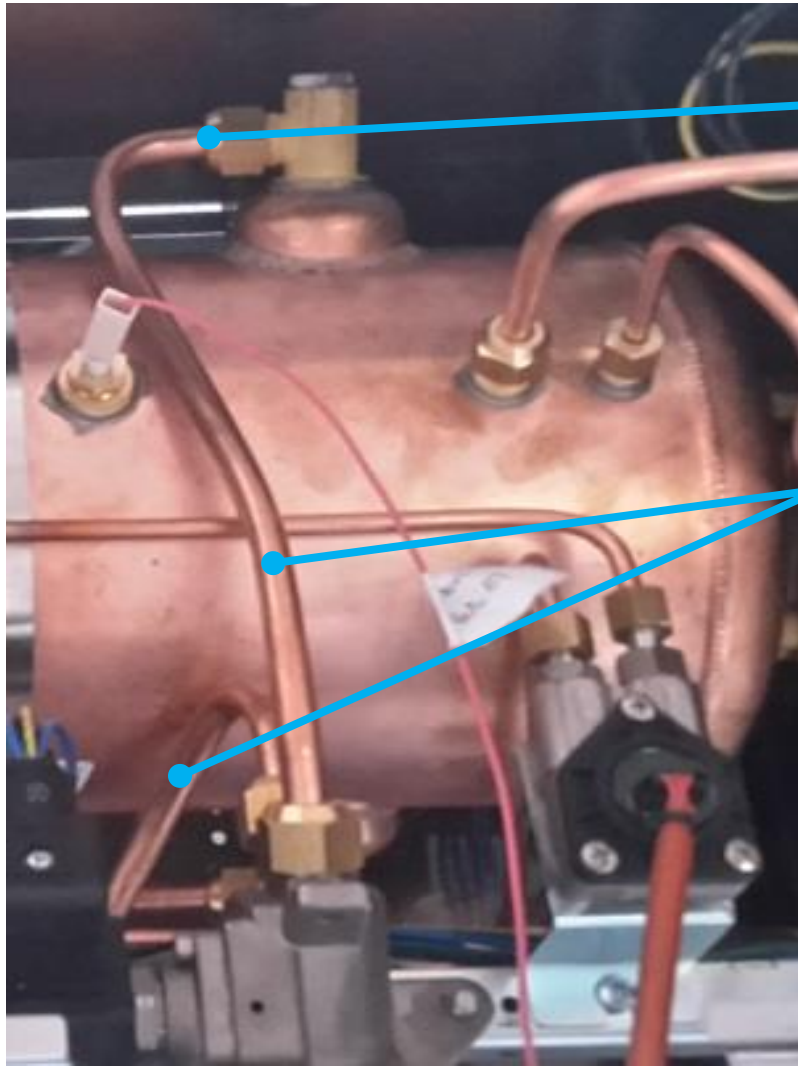
The temperature regulation is achieved via two nozzles drilled directly into the joints between supply and return pipe.

The thermal is a unique and unified is:

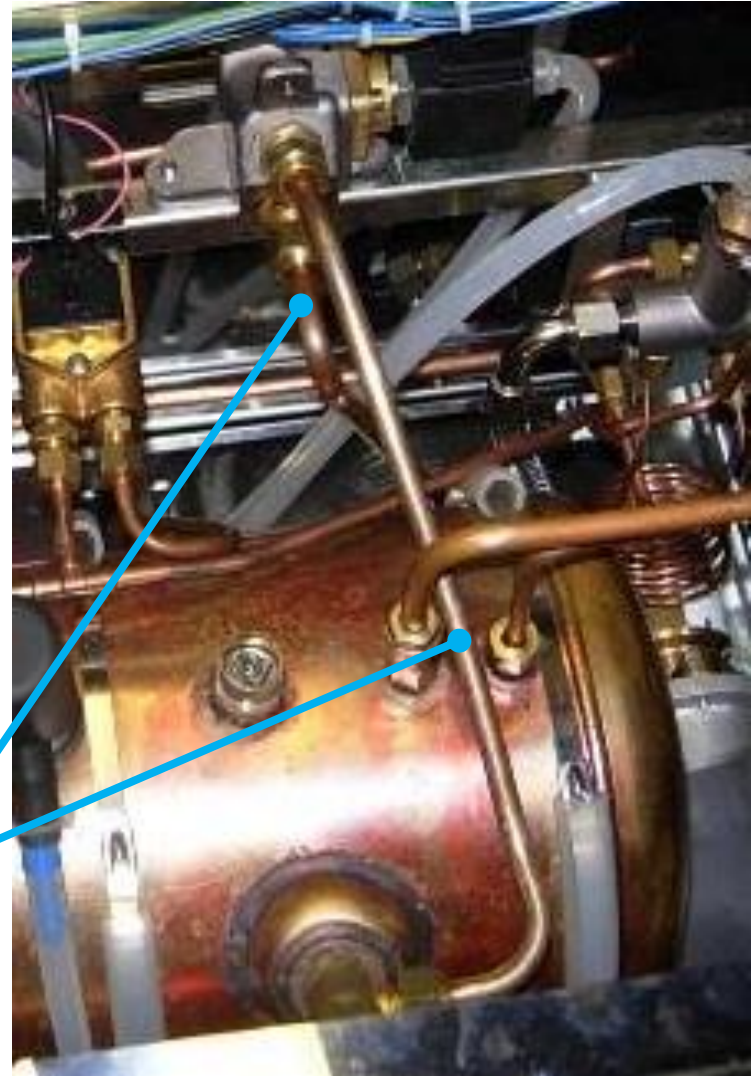
Standard Hot nozzle = 3,5 mm

Standard Cold nozzle = 3,5 mm

Thermal: differences Vs DIECI



Undici

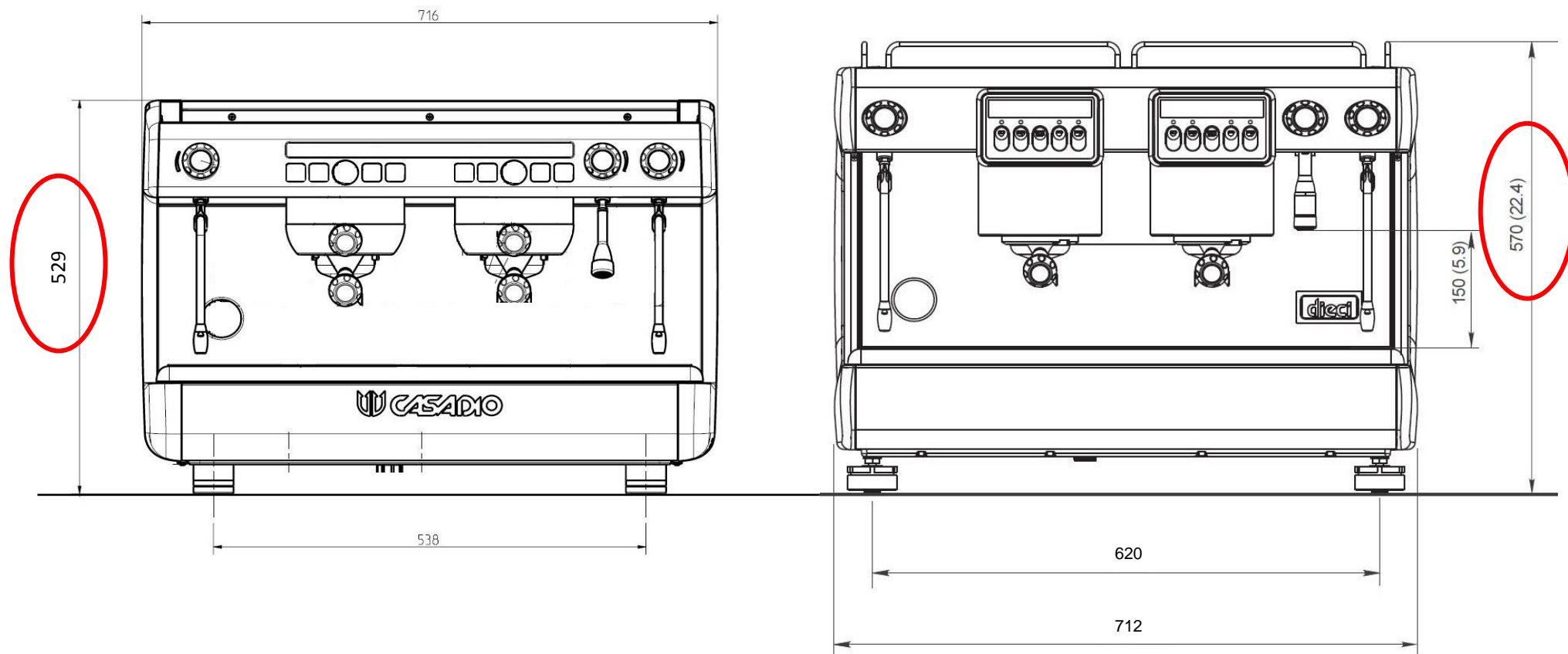


Dieci

technical and functional
characteristics



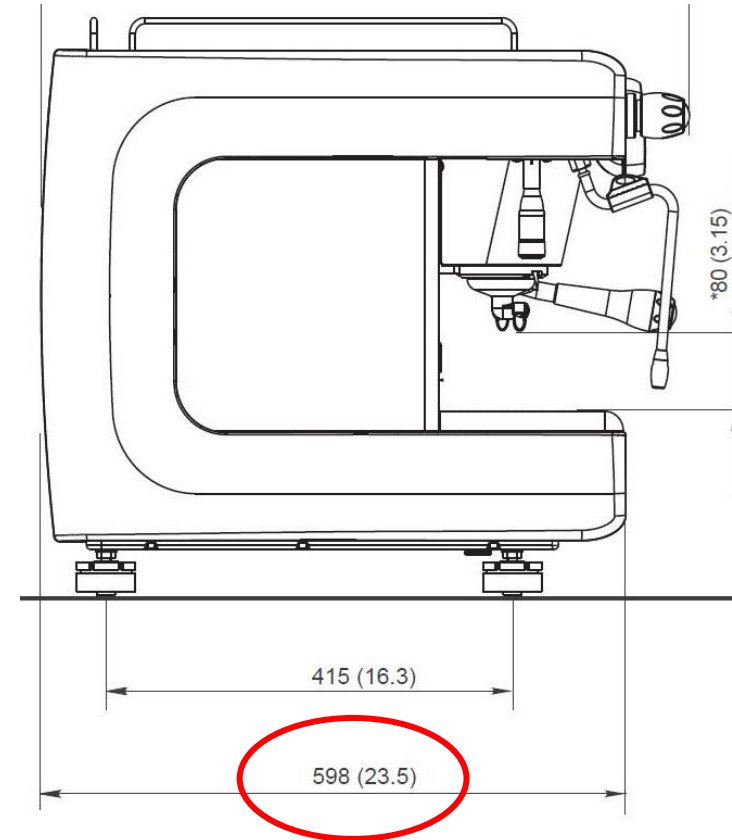
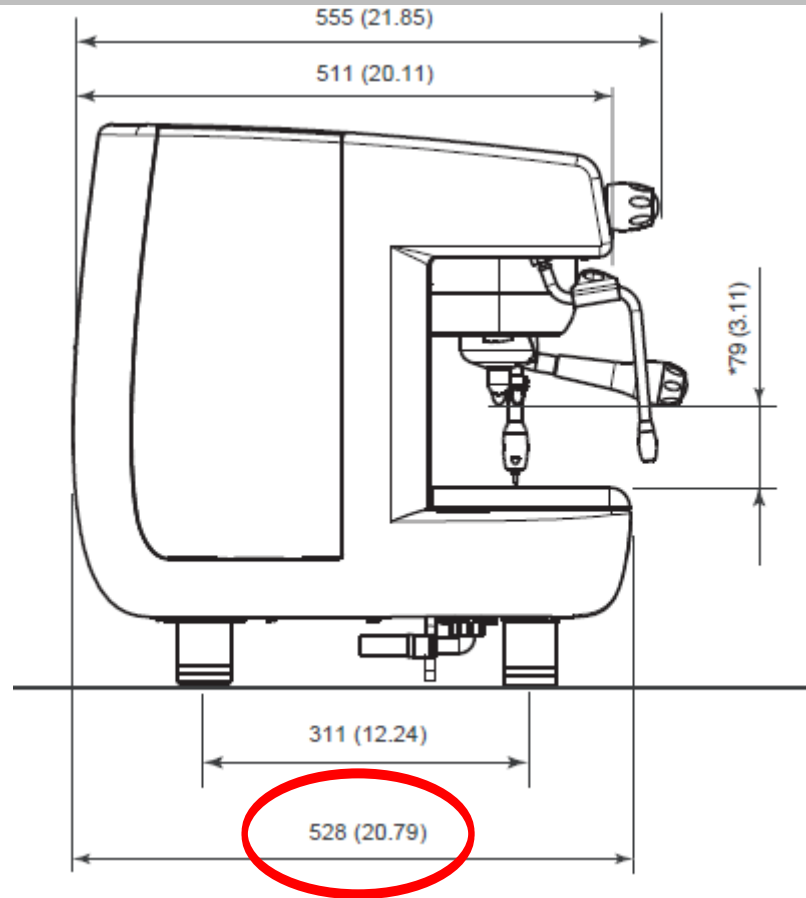
Small size Vs Dieci



Height
529mm Vs 570mm

DELTA: - 41 mm

Smaller size Vs Dieci



Depth
528mm Vs 598mm

DELTA: - 70 mm

Cup Warmer

Casadio UNDICI can have as standard the electric cup warmer on the version supplied in single phase.

Therefore the electric cups warmer is an option, fitted in factory line.

KIT cup warmer is not available .

You will find in the next slide, dedicated to " Gamma & Encoding ", all the identification codes

New key pad



- ✓ Pushbutton “in line” with control panel
- ✓ Pushbutton larger
- ✓ Pushbutton in stainless steel
- ✓ Pushbutton illuminated by LED

New water dispenser



- ✓ new water dispenser in stainless steel

Nuove cover gruppo



✓ New covers for the group aesthetic

Nuove piedi in acciaio inox



✓ New feet in stainless steel



New gouge



- ✓ Gouge with new sleeker design and improved readability

custom areas

NEW



NEW



OLD



OLD

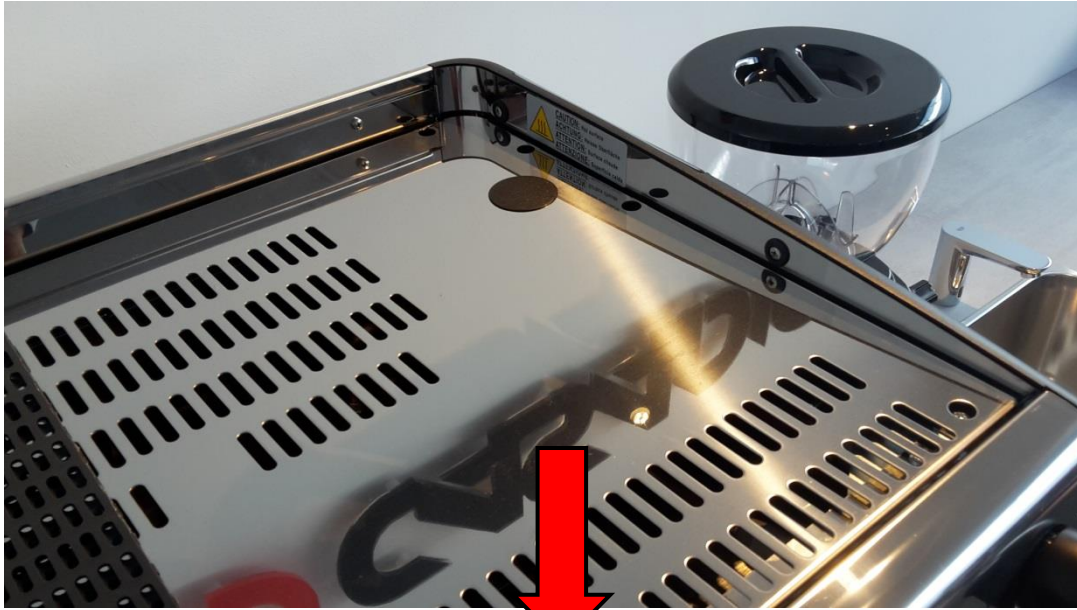
customizable back sticker



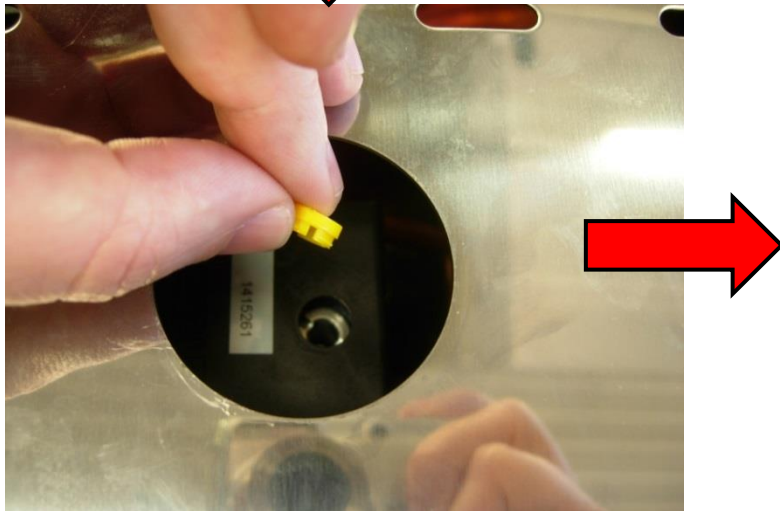
New customizable logo (2 groups = L355 x H 18).

Possibilities of substitution on with extreme easy field

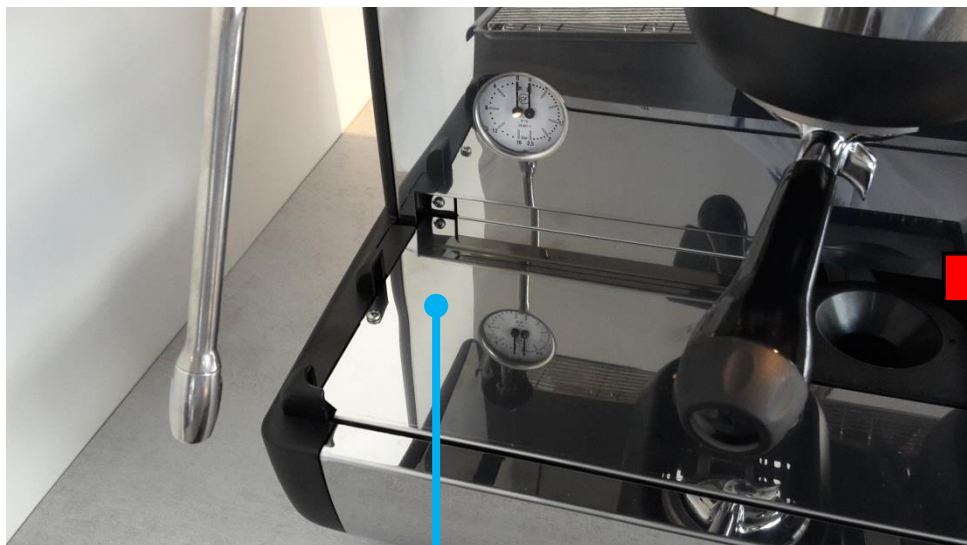
pressure regulation



- ✓ It's possible access the switch without removing the warming plate

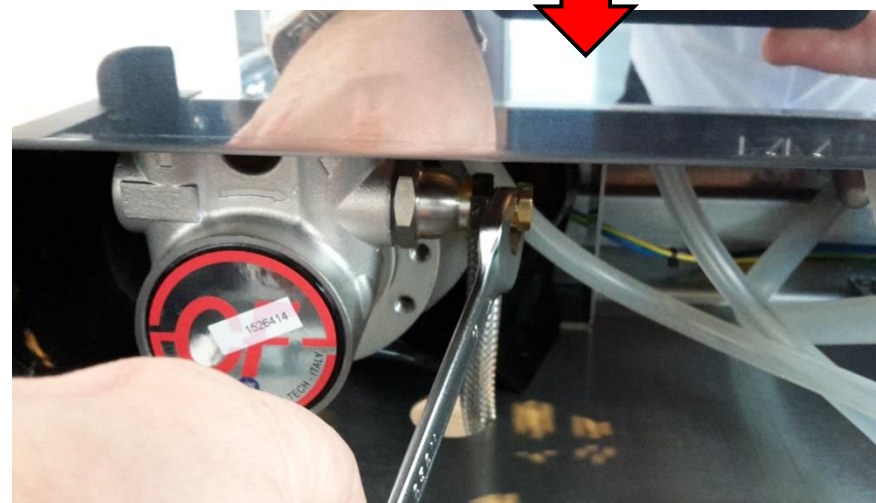
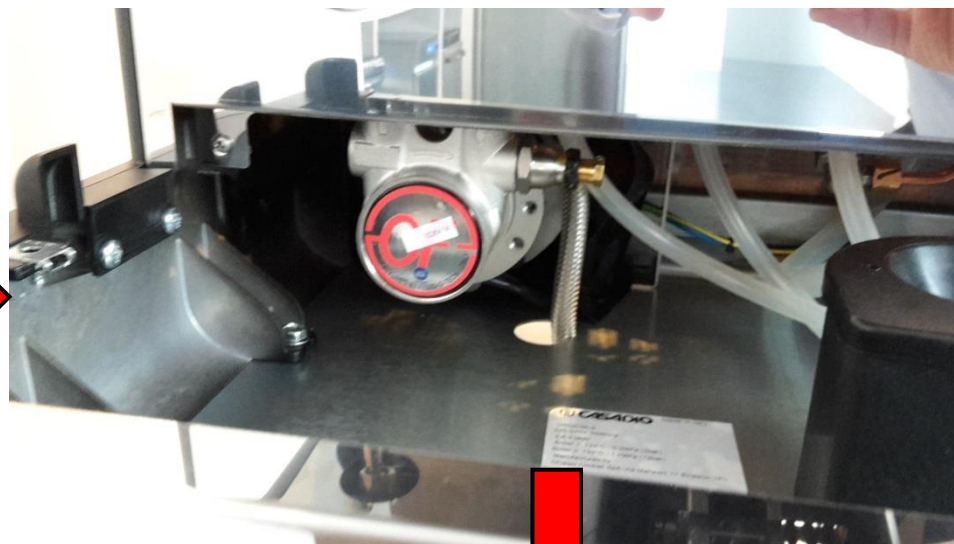


Pump regulation



Pump in stainless steel Pump with bayonet fixing . The bypass is easily accessible by simply removing the protective cover placed under the basin.

You can adjust the by-pass in front of the machine



Machine set



The Casadio UNDICI set is the same of actual Dieci:

- 1 filter holder double
- 1 filter holder single
- 1 shower disk
- 1 cleaning brush
- 1 drainpipe
- 1 user manual

Ruveko Teck

Patented

RUVECO TECK

To avoid water coming into contact with heavy metals, Gruppo Cimbali has an exclusive contract with a chemical company to apply the **RUVECO TECK** treatment to certain machine elements. In particular the water heater and the supply group.

The **RUVECO TECK** treatment is exclusive: it cannot be used by another company without prior agreement with Gruppo Cimbali.



The treatment involves de-leading brass in a chemical bath and then coating it with an anti-corrosion protective layer.

The **RUVECO TECK** treatment meets the EC 1935 / 2004 food contact materials regulations and has been approved and included in the NSF 51 Food Equipment Standards.

DIN

GROUP CIMBALI has voluntarily decided to submit representative samples, relative to the line of products documented in this manual, to the severe tests of the standard DIN 10531: 2010 in force from June 2011 (Food hygiene - Production and delivery of hot drinks by machines - Toilet request , of substances migration test).

The analytical tests were conducted by the Eurofins Group, the Group of Independent Laboratories, a world leader in the industry, offering a broad portfolio of analytical methods accredited to test security, configuration, purity, composition, authenticity and origin of products and biological substances.

The analytical tests carried out by Eurofins about the release of lead and nickel in the liquid dispensed, were performed on all uses of each machine subjected to tests. At the conclusion of the evidence,

Eurofins has verified that the sampled values were all below the limits set by DIN 10531.





Range &
Configuration

CASADIO

undici

CASADIO
GRUPPO CIMBALI

Range UNDICI



Version A2 Single phase

UA230HWUZ999A UNDICI A/2 50/60M WHITE

UA230HRUZ999A UNDICI/A-2 50/60M **RED**

UA230HBUZ999A UNDICI A/2 50/60M **BLACK**

Option Cup Warmer

UA230ZWUZ999A UNDICI/A-2 50/60M CW WHITE

UA230ZRUZ999A UNDICI/A-2 50/60M CW **RED**

UA230ZBUZ999A UNDICI/A-2 50/60M CW **BLACK**



Range UNDICI



Version S2 Single phase

UA252HWUZ999A UNDICI/S-2 50/60M WHITE

UA252HRUZ999A UNDICI/S-2 50/60M **RED**

UA252HBUZ999A UNDICI/S-2 50/60M **BLACK**

Option Cup Warmer

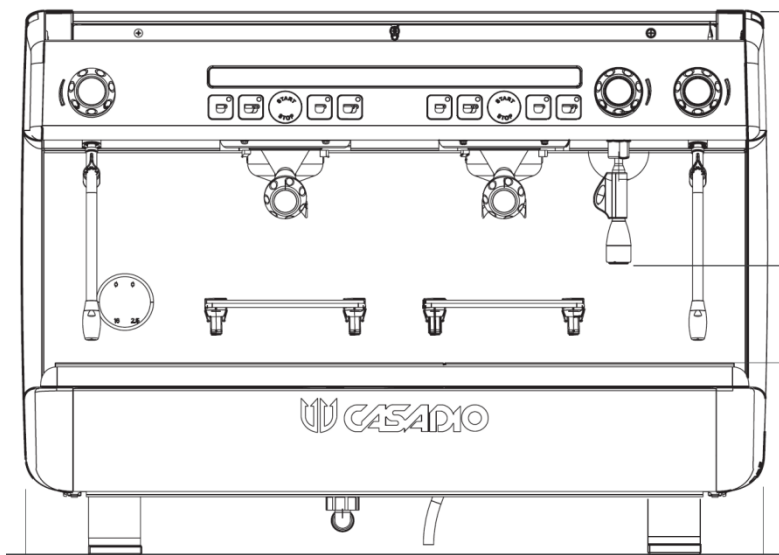
UA252ZWUZ999A UNDICI/S-2 50/60M WHITE

UA252ZRUZ999A UNDICI/S-2 50/60M **RED**

UA252ZBUZ999A UNDICI/S-2 50/60M **BLACK**



Range UNDICI A2 TALL CUP



Version A2 Tall Cup

UA230HWUZDDAA UNDICI/A-2 50/60M TC **WHITE**

UA230HRUZDDAA UNDICI A/2 50/60M TC **RED**

UA230HBUZDDAA UNDICI/A-2 50/60M TC **BLACK**





Selling point

CASADIO

undici



CASADIO
GRUPPO CIMBALI

Selling point



- **Small size**
- **Ease to use**
- **Customizable**
- **Strong and ergonomic**
- **New key panel with LED**
- **New pushbutton**
- **Water wand in stainless steel**
- **Cup warmer optional for single phase**
- **Tubes thermosiphonic increased**

Benchmark Undici Vs Dieci

Benchmark C	Dieci	Undici
		
Dimensioni: l x p x h	712 x 598 x 570	716 x 528 x 529
Lighting selection keys	Normally off only it lights in the drink dispensing button	Yes, always on (LED)
Key pad push button	Small in plastic	Steel, and wide
hot water dispenser	Plastic	Steel
Feet	Plastic	Aesthetic steel
Customizable areas	Difficult with invasive technologies	Simple via stickers
Cup warmer	Kit	Optional with specifical code
Tubes thermosiphonic	6mm x 8mm	8 mm x 10 mm
Campact version	No	Yes