



# LIGHT EYES

Catalog

# About



We welcome all global partners to negotiate on the expanding of the sales area, and the content of the service in the future. We have many ways of cooperating. ( wholesale and retail / distribution / regional agency / general agent )  
If you are interested, please send a message directly by E-mail, and a dedicated person will contact you.

E-mail : [lighteyes1025@gmail.com](mailto:lighteyes1025@gmail.com)



[Website Link](#)  
For more products  
and LIGHTEYES details



[Youtube Link](#)  
For more products  
and LIGHTEYES videos



[Facebook Link](#)  
For more LIGHTEYES  
Activity details



**SGS**



LIGHTEYES products acquired South Korean government recognized KC certification and the SGS certification in Taiwan.

## Curl



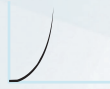
**J(I) Curl / 30°**  
The most natural curl to human eyelashes.



**CC(D) Curl / 60°**  
The curl that accentuate your eyes.



**B Curl / 40°**  
Natural curl.



**U Curl / 75°**  
Unique appearance to stand out/  
The straight uplift curl may highlight your eyes and show a soft zoom effect.



**C Curl / 50°**  
Voluminous eyelashes .



**L+ Curl / 70°**  
Unique appearance to stand out and lifts the lashes to add depth to your face structure.

## Diameter



0.05mm



0.07mm



0.10mm



0.15mm



0.20mm



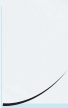
0.08X0.16mm

Lighter Volume

Natural Volume

Flat Volume

## Length



6mm



7mm



8mm



9mm



10mm

For Lower Eyelash



11mm



12mm



13mm



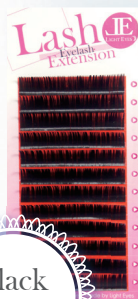
14mm



15mm



# Eyelash



Black  
velvet

MIX 8~13mm		
J	0.07	6/7 (Lower eyelash)/8/9/10/11/12/13/MIX
	0.10	6 (Lower eyelash)/8/9/10/11/12/13/MIX
	0.15	8/9/10/11/12/13/MIX
B	0.07	8/9/10/11/12/13/MIX
	0.10	
	0.15	8/9/10/11/12/13/14/MIX
C	0.07	8/9/10/11/12/13/14/MIX
	0.10	
	0.15	
C C	0.07	8/9/10/11/12/13/14/MIX
	0.10	9/10/11/12/13/14/MIX
	0.15	
L+	0.15	9/10/11/12/13/14

★ Synthetic Mink eyelash /

The texture is soft and flexible. It's the first choice for eyelash grafter.



U Lash

MIX 8~13mm		
U	0.07	8/9/10/11/12/13/MIX

★ Synthetic Mink eyelash / 75 degree angle curl

Exclusive smiling curve show a soft zoom effect to your eyes.

It's suitable for all kinds of eye shapes especially for special eye types.



Color  
velvet

MIX 8~13mm			
● Brown	C	0.15	MIX
● Blue			
● Purple			
● Red			

★ Synthetic Mink eyelash /

The texture is soft and flexible. It's the first choice for eyelash grafter.



MIX 8~13mm



Two-tone

● Brown	C	0.15	MIX
● Blue			
● Purple			
● Red			
● Pink			
● Two-tone MIX	C	0.15	9/11/13

- ★ Synthetic Mink eyelash /  
MIX include-Brown/Blue/Purple/Red/Green in one tray.



Color lash

Color lash	C	0.15	11/12
------------	---	------	-------

- ★ Synthetic Mink eyelash /  
Color lash includes 10 colors in one tray.



6S  
Premade

B	0.07	9/10/11/12/13
C		

- ★ Synthetic Mink eyelash / 6D premade fan are composed of three different lengths,  
They are easier to apply than regular eyelash extensions.

# Eyelash



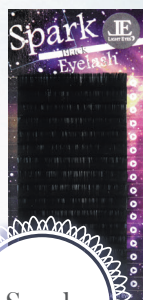
Shine

MIX 8~13mm

C	0.05	8/9/10/11/12/13/MIX
C C	0.05	9/10/11/12/13/MIX

★ Synthetic Mink eyelash /

The natural color of Shine lashes makes it a better fusion with true eyelashes.  
Gives you a wonderful experience of eyelash applying.



Spark

MIX 7~15mm

J	0.07	6/7 (Lower eyelash)/8/9/10/11/12/13/MIX
	0.10	6 (Lower eyelash)/8/9/10/11/12/13/MIX
	0.15	8/9/10/11/12/13/MIX
C	0.07	8/9/10/11/12/13/14/MIX
	0.10	
	0.15	
C C	0.07	8/9/10/11/12/13/14/MIX
	0.10	9/10/11/12/13/14/MIX
	0.15	

★ Synthetic Mink eyelash /

Basic with Black Velvet and made of nano-brightening technology  
for high quality and high gloss.



Phoenix

MIX 8~13mm

J	0.16x0.08	8/9/10/11/12/13/14/MIX
C		

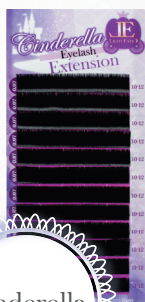
★ Synthetic Mink eyelash /

Use 3D compression technology to create a burst of eyelashes with flat visual effects.



U	0.07	8-10/9-11/10-12/11-13/12-14
---	------	-----------------------------

- ★ Synthetic Mink eyelash / 75 degree angle curl  
The top velvet lashes with long and short streaks  
can get closer to the natural feel of true eyelashes by grafting in blasting techniques.



C	0.07	8-10/9-11/10-12/11-13/12-14/MIX
CC	0.07	8-10/9-11/10-12/11-13/12-14/MIX

- ★ Synthetic Mink eyelash /  
The top velvet lashes with long and short streaks  
can get closer to the natural feel of true eyelashes by grafting in blasting techniques.



C	0.07	8-10/9-11/10-12/11-13/12-14
---	------	-----------------------------

- ★ Synthetic Mink eyelash /  
The top velvet lashes with long and short streaks  
can get closer to the natural feel of true eyelashes by grafting in blasting techniques.



# Eyelash



Butterfly  
Brown

MIX 8~13mm			
● Brown	J	0.07	6+7 (Lower eyelash)
	C	0.07	8/9/10/11/12/13/MIX
	CC	0.07	9/10/11/12/13/MIX

- ★ Synthetic Mink eyelash /  
Extremely delicate touch. Won't feel out of place even if grafting full color.  
(J/0.07 includes 6mm and 7mm in one tray.)



Butterfly

MIX 8~14mm			
● Blue	C	0.07	MIX
● Purple			

- ★ Synthetic Mink eyelash /  
Extremely delicate touch. Won't feel out of place even if grafting full color.



Two-tone  
Butterfly

MIX 8~14mm			
● Brown	C	0.07	MIX
● Blue			
● Purple			

- ★ Synthetic Mink eyelash /  
Gradient color, extremely delicate touch. Won't feel out of place even if grafting full color.

# Adhesive 5ml



Drying Time 0.5~1.5 sec

Retention Time 6~8 weeks

Temperature: 20~27 degree  
Humidity: 45~85%



Drying Time 1 sec

Retention Time 6~8 weeks

Temperature: 20~27 degree  
Humidity: 40~80%



Drying Time 1~2 sec

Retention Time 6~8 weeks

Temperature: 20~27 degree  
Humidity: 45~85%



Drying Time 2~3 sec

Retention Time 6~8 weeks

Temperature: 20~27 degree  
Humidity: 50~80%



Drying Time 3~4 sec

Retention Time 5~7 weeks

Temperature: 20~27 degree  
Humidity: 50~70%



Extend the grafting time and  
strengthen the eyelash adhesive  
properties.

# Tweezer

Lighteyes tweezer - made in japan.



Magic J



Magic M



Magic F

○ This series includes a leather case.

# Eyelash care



6D Mascara 10 ml

【Volumes use/fragrant mascara】

Protect eyelash extensions from moisture and oil.



Growth Liquid 7 ml

With just a slightest amount daily may help revive your lashes.



Exquisite Mascara 10 ml

【Volumes use】

Protect eyelash extensions from moisture and oil.

Eyelash  
Foam



- 100 ml  
Face washing&Lashes cleaning  
Oil-free formula ,Dedicated for eyelash applying .

Eye  
Gel Patch



- 100 pairs / per bag  
Oil-free & no residue  
Used as both an eye treatment and a useful cover to protect the lower lashes during eyelash extension application.



# Application

## Glue Remover



- Made in Japan / Capacity: 30g  
It is made with wheat germ oil.  
The semi-solid paste prevents flowing into eyes.  
Should be used with Micro Brush.

## Korea Glue Remover



- Made in Korea / Capacity: 15ml  
Apply appropriate amount on the eyelash adhesive with Micro Brush, wait for about 3 minutes and remove the adhesive gently.

## Protein Remover



- Capacity: 100ml  
Used before applying eyelash extensions.  
To remove superfluous oil and protein also strengthen the extensions after applying.

## Remover Lotion



- Capacity: 10ml  
For tools cleaning  
Do not use in real eyelashes

## Makeup Remover



- 32 pieces / per bottle  
Makeup removing and cleaning.  
The delicate soft fiber cloth provides moisture protection to skin needs while removing the makeup.

# Application

Sponge



- 10 pieces / per pack  
Color : purple / pink / blue

Eyelash  
Brush



- 100 per pack  
Every brush comes with an exclusive protective case  
Length: 14 cm

Eyelash  
Brush



- 100 per pack  
Length: 10.5 cm

Spa Brush



- Length: 14 cm  
Bevel cutting brush head ,  
clean the lashes and eye zone deeply.  
Comes with an exclusive protective case.

Air Blower



- Air Blower (L) Peach (S) Pink  
Increase the drying time of eyelash adhesive

Glue ring



- 100 pieces / per pack

Folding  
mirror



- Size : 17.5 x 7.7 cm  
Mirro Size : 8.2 x 6.4 cm  
Color : black / purple / pink

Fan



- Weight: body 128 g, fan blade 39 g  
Size: body 68 x 43 x 197 mm  
fan blade 60 x 60 x 43 mm  
Color : white / black / green

Medical tape



- Surface with a layer of film prevents adhesive residue.

Japan  
medical tape



- 24 roll / per box  
Made by Japan NICHIBAN company  
size: width 1.2 cm / length 7 meter

Micro Brush



- 100 per pack  
Used while removing or cleaning eyelashes  
not only effectively removing the eyelash adhesive  
or dirt from the details,  
No lint, so as to avoid touching the eyes.

Hygrometer



- size: 8 X 2.5 X 14 cm / The base is detachable  
This product does not attach a battery  
(You'll need 2 AAA-4 battery )  
Instruction manual are included in the product.



# Application

Magnifier  
glasses



- 3 kinds of multiple: x1.5 / x2.0 / x2.5

Mannequin  
head



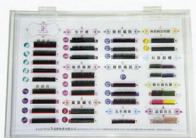
- For eyelash grafting practice use.

Eyelash for  
practice



- 5 pairs / per box

Eyelash  
display box



- Transparent acrylic display box( top cover type )  
Size: 31.6 x 23 x 23.3 cm

This product will take about 3~5 days to produce,  
and be shipped in order.

Make up box



- Size : 25cm x 21 cm x 28.5 cm  
Color : black / pink

Large smooth thick satin material  
Three-layer large capacity space  
Strap



- 10 pieces / per pack



- Circle 65x65mm
- Rectangle 50x70mm



- Circle 55x55mm
- Rectangle 90x45mm



- Circle 50x50mm



- 1 / per box



[www.lighteyes.com.tw](http://www.lighteyes.com.tw)



LIANG YAN AESTHETICS ENTERPRISE CO., LTD

TEL+886-2-2502-9911 FAX+886-2-2504-6161