

# The Megapixel & WDR IP Box Camera

The new era of innovations in network surveillance technology is here!

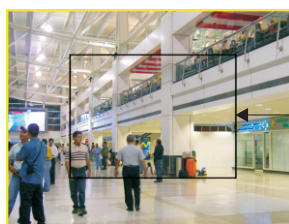
## WDR / Day & Night / H.264

### LC-7411

APPRO's LC-7411 is a high performance Fixed Network Camera which is equipped with a 1.3 megapixel CMOS sensor and a resolution of up to 1280x960 / 1280x720.

#### ● 1.3 Megapixel

The LC-7411 offers you to view the video feed with a large field of high resolution at a 1.3 megapixel that enables to provide you the clear image with great detail.



#### ● WDR

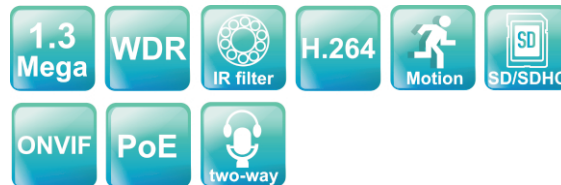
Besides, the LC-7411 provides the WDR technology which is aimed at coping with problems like poor quality images shot against a strong backlight.



WDR camera

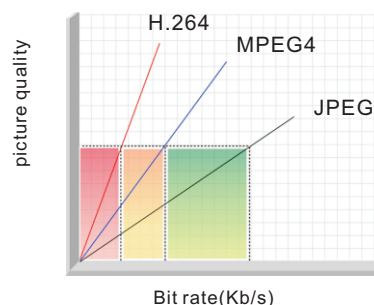


No WDR



#### ● H.264 compression

Currently, the H.264 is the most common and dynamic video compression format and a powerful compression codec which delivers a superior image quality at a low bit rate.



Picture quality & Bit rate comparison chart

## Features

- Adopts TI TMS320DM365 digital media processor.
- Sony 1.3-megapixel CMOS sensor.
- Simultaneous H.264, MPEG4, and MJPEG video compression.
- Three Multi-profile applications: Selectable resolutions, frame rates, qualities, and image chopping.
- Two-way audio.
- Supports WDR (Wide Dynamic Range).
- Advanced motion detection (512 zones, Sensitivity: 0~100 %).
- Built-in SD / SDHC card for schedule and alarm recording.
- Supports ONVIF .
- Full range of power options: DC12V / AC 24V / PoE (IEEE 802.3af).

# The Megapixel / WDR / Day & Night / H.264 IP Box Camera LC-7411

## SPECIFICATIONS

### Camera

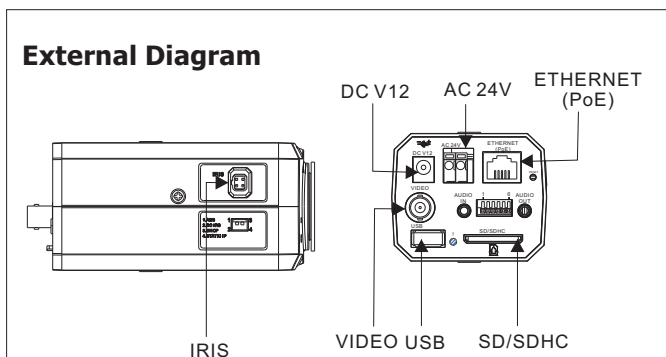
- Image sensor: 1.3M Sony IMX035 CMOS Sensor.
- Lens: CS-mount.
- Minimum illumination: Color: 0.2 Lux @ F1.4 ;  
B/W:0.01 Lux @ F1.4.
- IR cut filter.
- Day & Night: Auto/ Day/ Night/ Schedule.
- WDR.

### Image system

- Video codec :
  - Simultaneous H.264, MPEG4 & MJPEG video streaming.
  - Simultaneous multi-profile video stream(3 profiles).
  - Controllable frame rate and bandwidth.
- Resolutions :
  - Aspect ratio:  
"4:3": 1280x1024, 1280x960, 1024x768, 800x600, 640x480,  
480x360, 320x240,160x120.
  - "16:9": 1280x720, 800x450, 640x360, 480x270, 320x180,  
176x120.
- Frame rate : Up to 30/25 fps in all resolutions.
- Image quality : 5 levels.
- Image configurations :
  - AGC, Exposure Time, Mirror, Flip, White Balance.
- Digital PTZ : Yes.
- OSD data : IP Address/Date/Time/Icon.
- Timestamp : Title/Date/Time.
- Exposure Mode:
  - Indoor, Outdoor, Night, Low-Noise, Moving,  
Customize x 3, Schedule.

### Audio

- Two-way audio..
- Compression: G.711 / G.726.
- Inputs / outputs: 1 x input / 1 x output(3.5mm earphone jack).



### Network

- Security: Multi-level password protection, IP address filtering, HTTPS encryption.
- Protocols: IPv4, ARP, TCP/IP, UDP, ICMP, DHCP, HTTP, HTTPS, RTP/RTCP/RTSP, NTP, DNS, DDNS, PPPoE, UPnP, SAMBA, FTP, SMTP.
- Users: Access by 10 simultaneous users.
- Firmware update: SD card / HTTP.

### Alarm

- Recording: by SD card / CMS recording.
- Pre-alarm recording.
- Advanced motion (512 zone, Sensitivity: 0~100 %).
- Trigger: by motion detection, manual, reboot, network disconnect, and digital input.
- Notification: SD card recording, SMTP, FTP, HTTP, alarm output.

### Connectors

- RJ-45: 10BASE-T/100BASE-TX.
- Digital I/O: Push-in: 1 x alarm input / 1 x alarm output / 1 x DC output (DC 12V) / 1 x Ground / 2 x RS-485.
- Earphone jack : 2x3.5 mm ( 1 x Audio in [mic. In / line in] , 1 x Audio out.
- DIP Switch: 1. AES 2. DC iris 3. DHCP 4. Static IP.
- Iris: DC IRIS.
- Reset: Reset for factory default.
- Local storage device: SD / SDHC card slot.

### General

- LED indicators: Power / Network / SD card.
- Power:
  - DC 12V (DC power jack) Approx. 4.8 W.
  - AC 24V (2pin terminal block) Approx. 6 W.
  - PoE: Approx. 6 W, IEEE 802.3af compliant class 2.
- Processors: TMS320DM365.
- OS: Linux 2.6 kernel.
- Operating conditions: 0 to 50°C (32°F to 122°F).
- Approvals: CE, FCC, RoHS, C-Tick.
- Dimensions (HxWxD): 56 x 68 x 125 mm.
- Accessories included:
  - Installation Guide.
  - CD x 1 ( includes User's Manual and CMS software).
  - Power adapter: (Input:AC 100-240V, 50/60Hz,Output: DC 12V , 1A).
  - USB cable x 1.

\*Design and specifications are subject to change without notice.

APPRO TECHNOLOGY INC.



Taiwan Headquarter  
13F, No. 66, Zhongzheng Rd., Xinzhuang Dist., New Taipei City, Taiwan.  
Tel : 886-2-8992-1177 Fax : 886-2-8992-0077  
E-mail : appro@aprotech.com  
Web site:www.aprotech.com

Office in U.S  
1180 Miraloma Way Suite E, Sunnyvale, CA 94085.  
Tel : 1-408-720-0018 Fax : 1-408-720-0019  
E-mail : approu@aol.com  
Web site:www.appro-us.com

www.aprotech.com

**APPRO**<sup>®</sup>  
TECHNOLOGY